

25, 40 and 60 A panel Zero-crossing SSR, "hockey puck" style

Type 77.A1.x.xxx.8x50: 25 A
Type 77.B1.x.xxx.8x50: 40 A
Type 77.D1.x.xxx.8x50: 60 A

8250: 24 to 280 VAC switching load voltage
8650: 24 to 660 VAC switching load voltage

- "hockey puck" housing with folding screw cover
- High endurance and switching speed
- Silent switching
- Spark and bounce-free switching
- Low control power
- "Relay-style": input and output terminals on opposite sides
- Mounting on control cabinet sheet metal or on heatsink

77.A1/B1/D1
 Screw terminal (plate clamp)*



* See recommendation for wiring page 15
 ** See L77-13, L77-14 and L77-15 diagrams page 19

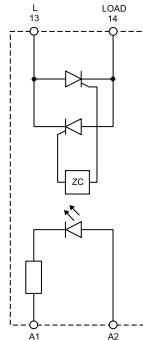
Four outline drawing see page 24

NEW 77.A1.x.xxx.8x50



Zero-crossing switch-on

- Output: 25 A
- Suggested applications: heater control, lamps, solenoid, contactor driver



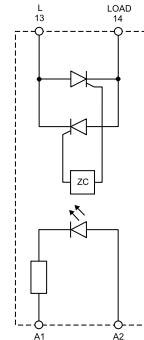
Simplified circuit diagram

NEW 77.B1.x.xxx.8x50



Zero-crossing switch-on

- Output: 40 A
- Suggested applications: heater control, lamps, solenoid, contactor driver



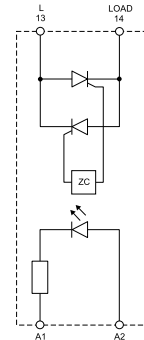
Simplified circuit diagram

NEW 77.D1.x.xxx.8x50



Zero-crossing switch-on

- Output: 60 A
- Suggested applications: heater control, lamps, solenoid, contactor driver



Simplified circuit diagram

Output specification	77...8250		77...8650		77...8250		77...8650		77...8250		77...8650	
	Output configuration	1 NO		1 NO		1 NO		1 NO		1 NO		1 NO
Rated current I _N /Max. peak current (10 ms) A	25/300		40/500		60/700							
Rated voltage V AC (50/60 Hz)	240		600		240		600		240		600	
Switching voltage range V AC (50/60 Hz)	24...280		24...660		24...280		24...660		24...280		24...660	
Operating frequency range Hz	47...400		47...400		47...400		47...400		47...400		47...400	
Repetitive peak off-state voltage V _{pk}	600		1600		600		1600		600		1600	
Nominal lamp rating:												
230 V incandescent/halogen W	2000		4000		7200							
fluorescent tubes with electronic ballast W	2000		4000		7200							
fluorescent tubes with electromagnetic ballast W	1000		2000		3600							
CFL W	800		3000		4800							
230 V LED W	800		3000		4800							
LV halogen or LED with electronic ballast W	800		3000		4800							
LV halogen or LED with electromagnetic ballast W	1000		3000		4800							
Minimum switching current @ 250 V mA	100		100		100							
Typical "OFF-state" leakage current @ rated voltage mA	0.1		0.1		0.1							
Max "ON-state" voltage drop @ 25 °C and I _N V	1.5		1.5		1.5							
Power loss @ I _N W	30		48		72							
Input specification												
Nominal voltage (U _N) V AC (50/60 Hz)	—		230		—		230		—		230	
V DC	24		—		24		—		24		—	
Rated power @ U _{MAX} VA (50 Hz)/W	—/0.55		5.3/—		—/0.55		5.3/—		—/0.55		5.3/—	
Operating range V AC (50/60 Hz)	—		90...280		—		90...280		—		90...280	
V DC	3...32		—		3...32		—		3...32		—	
Must drop-out voltage V AC (50/60 Hz)/DC	—/1		15/—		—/1		15/—		—/1		15/—	
Technical data												
Electrical life cycles	—		—		—		—		—		—	
Operate/release time ms	10/10		40/20		10/10		40/20		10/10		40/20	
Insulation between input and output (1.2/50 μs) kV	—		—		—		—		—		—	
Ambient temperature °C	-30...+80**		-30...+80**		-30...+80**		-30...+80**		-30...+80**		-30...+80**	
Protection category	IP 20		IP 20		IP 20		IP 20		IP 20		IP 20	
Approvals (according to type)												