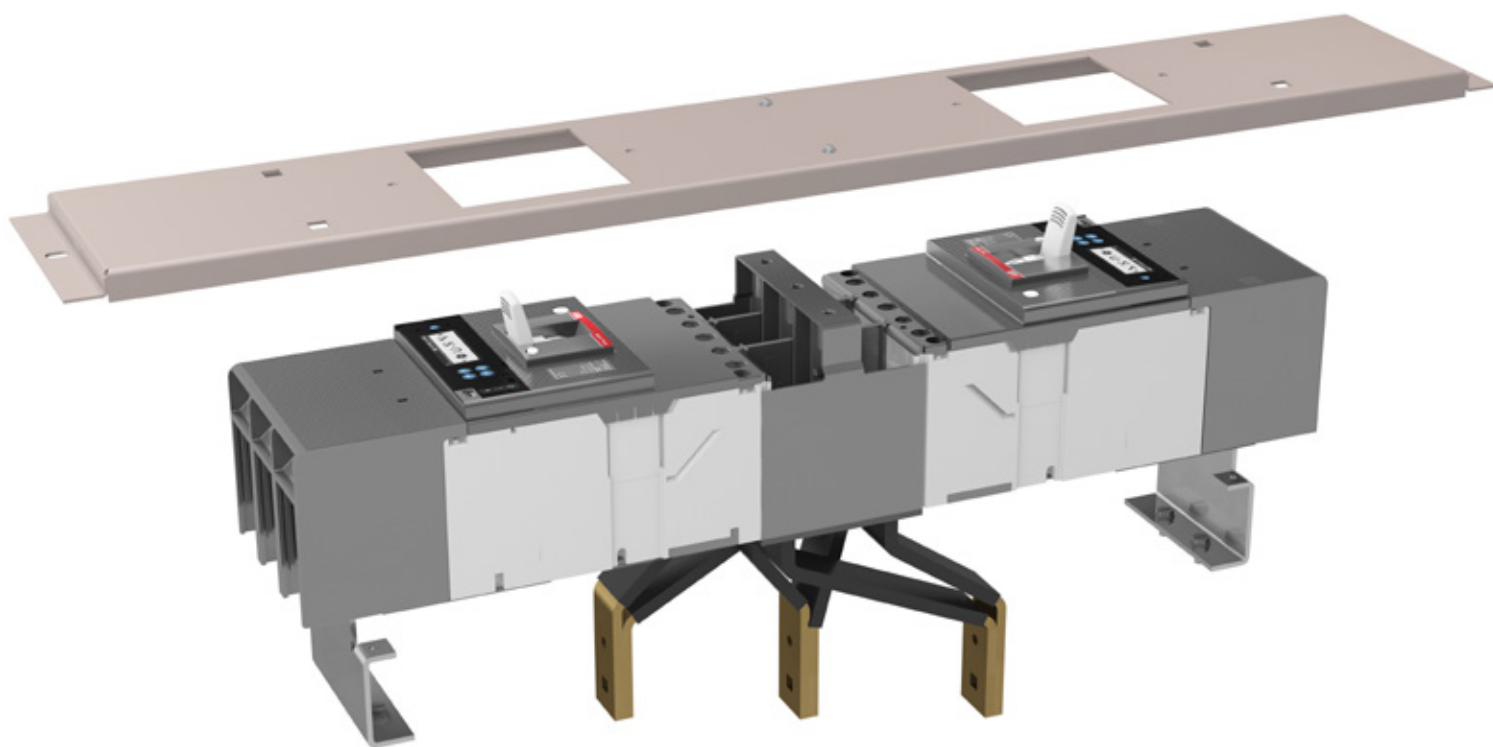


POWER PANELBOARDS AND SWITCHBOARDS

Tmax[®] XT retrofit kits for Spectra[™] panelboards

Extending the life of your installation

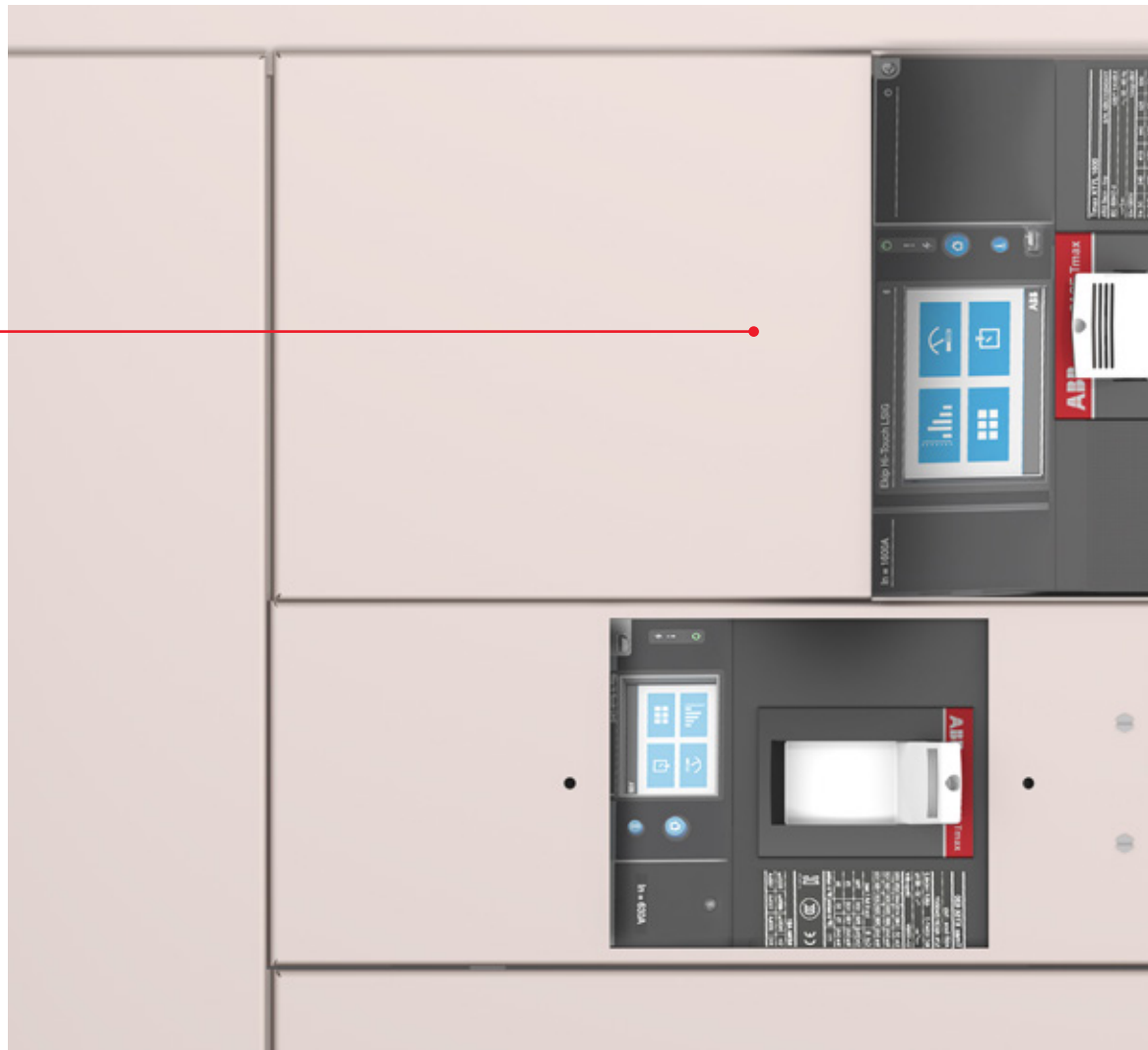


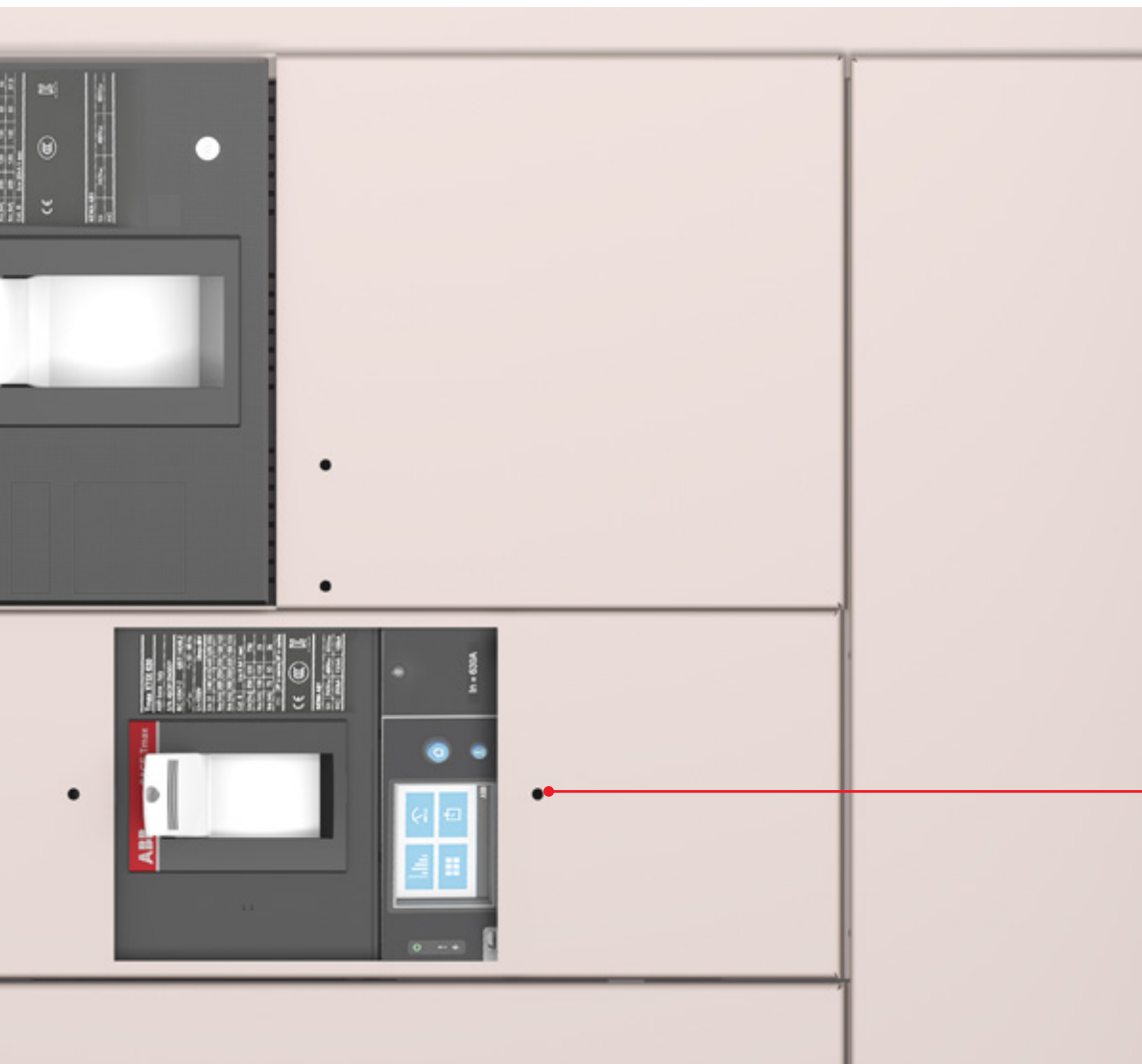
Tmax® XT retrofit kits for Spectra™ panelboards and switchboards

The right choice for your application

Single mount kits⁰¹ available
for 250 A, 600 A, 1200 A
frames

⁰¹ Maximum of two Tmax® XT4, XT5 or XT7 retrofit kits can be installed, side by side, in an existing Spectra™ panelboard installation





Dual mount kits⁰¹ available
for 150 A, 250 A, 400 A frames

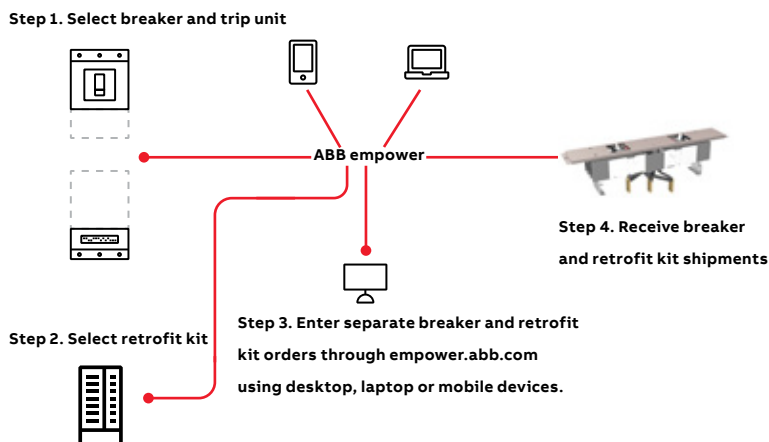
Choosing the right retrofit has never been so easy

You consider what you need.
We will show you what's possible

The world of electrical distribution is a complex one, yet choosing the right device for your individual needs has never been simpler thanks to this Tmax® XT retrofit⁰¹ offering for Spectra™ Panelboards and Switchboards. Maybe you are looking for a basic protection device for a standard distribution system.

Or perhaps you need something more complex, such as a locking mechanisms or devices that integrate protection, automation, measuring and communication into a cloud-based supervision system. Follow the flowchart when placing an order. All mounting kits, filler plates and hardware required are included under a single part number. Circuit breakers are ordered separately.⁰²

Note: All installed retrofit kits must be documented and reviewed by local inspector for code compliance. Using Tmax XT circuit breakers with retrofit kits maintains UL 67 listing of the panelboard (UL file number E2366).



Bolt-on Strap Kits - Type SRFB

Example:	SRFB	6 Poles	XT1 C/B Frame	B Mounting	FPX Accessory Code
		3	XT1 = Tmax® XT XT1	Blank = Main or Branch	FPX = With Filler Plate Kit (full width plates with cutouts for handles, etc.)
		6	XT4 = Tmax® XT XT4	B = Branch Only	FPK = With Filler Plate Kit and Kirk Lock Provision
			XT5 = Tmax® XT XT5	M = Main Only	
			XT7 = Tmax® XT XT7		

Neutral CT Kits - Type SRFN

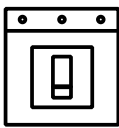




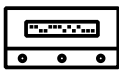




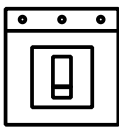
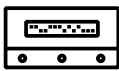
Example:	SRFN	400 Ampere Rating	GF Modification Code
		400 = 400A Tmax® XT XT5 ⁰³	GF = Tmax® XT Spectra™ Panel Neutral CT kit
		600 = 600A Tmax® XT XT5 ⁰³	
		800 = 800A Tmax® XT XT7	
		100 = 1000A Tmax® XT XT7	
		120 = 1200A Tmax® XT XT7	

⁰¹ Maximum of two Tmax® XT4, XT5 or XT7 retrofit kits can be installed, side by side, in an existing Spectra™ panelboard installation

⁰² For instantaneous selectivity, see DET-760. For series ratings, see DET-008.

⁰³ XT5 Neutral current transformer kit is suitable for use with Ekip DIP trip units only.

Possible combinations within the range

	Legacy Spectra™ breaker				
		Spectra™ E Frame	Spectra™ F Frame	Spectra™ G Frame	Spectra™ K Frame
	Tmax® XT Breaker				
		Tmax® XT1	Tmax® XT4	Tmax® XT5	Tmax® XT7
	Industrial applications		•	•	•
	Commercial and industrial applications	•	•	•	•
	Thermal-magnetic trip units	•	•	•	
	Electronic trip units		•	•	•

	125 A dual mounted		250 A dual mounted		250 A single mounted	
	Box width range / X height		Box width range / X height		Box width range / X height	
Legacy Spectra™ based Kit	AMCB6EBFP	–	AMCB6FJFP	–	AMCB3FJFP	–
Tmax® XT Kit ^{01, 03}	SRFB6XT1FPX	27"-44" / 3X	SRFB6XT4FPX	31"-44" / 3X	SRFB3XT4FPX	27"-44" / 3X
Tmax® XT Kit with Kirk lock provisions ^{01, 03}	SRFB6XT1FPK	27"-44" / 3X	SRFB6XT4FPK	31"-44" / 3X	SRFB3XT4FPK	27"-44" / 3X

	400 A dual mounted		600 A single mounted		1200 A single mounted	
	Box width range / X height		Box width range / X height		Box width range / X height	
Legacy Spectra™ based Kit	AMCB6GBFP	–	AMCB3GMFP	–	AMCB3KMFP	–
Tmax® XT Kit ^{01, 03}	SRFB6XT5BFPX	40"-44" / 4X	SRFB3XT5MFPX	27"-44" / 4X	SRFB3XT7MFPX ^{02, 04}	40"-44" / 6X
Tmax® XT Kit with Kirk lock provisions ^{01, 03}	SRFB6XT5BFPK	40"-44" / 4X	SRFB3XT5MFPK	27"-44" / 4X	SRFB3XT7MFPK ^{02, 04}	40"-44" / 6X

SRFN400GF ⁰⁵	XT5 UL 400 A Neutral current transformer kit
SRFN600GF ⁰⁵	XT5 UL 600 A Neutral current transformer kit
SRFN800GF	XT7 UL 800 A Neutral current transformer kit
SRFN100GF	XT7 UL 1000 A Neutral current transformer kit
SRFN120GF	XT7 UL 1200 A Neutral current transformer kit

	Frame			
XT Breakers with retrofit kit	XT1	XT4	XT5	XT7
Rated current (A)	125	250	400/600	1200
SCCR 240 V (kA)	100	200	200	200
SCCR 480 V (kA)	65	100	100	100
SCCR 600 V (kA)	25	25	65	65

01 Maximum of two Tmax® XT4, XT5 or XT7 retrofit kits can be installed, side by side, in an existing Spectra™ panelboard installation

02 XT7 breaker handle extension included in this kit

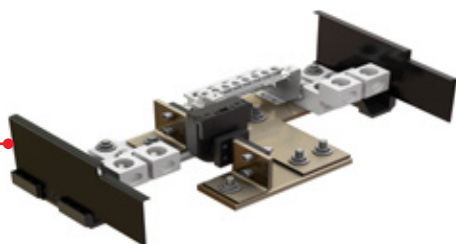
03 Kits are only for use with 80% rated breakers

04 XT7 retrofit kit can be used for a main or feeder

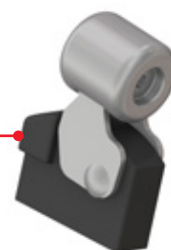
05 XT5 Neutral current transformer kit is suitable for use with Ekip DIP trip units only.

Accessories for retrofit kits

The parts you might need for your installation



Neutral Current Transformers
for XT5 and XT7



XT7 folding handle reduces handle operation
effort and are included in XT7 retrofit kits

XT1 Kirk Lock

XT4 Kirk Lock

XT5 Kirk Lock

XT7 Kirk Lock

