

# Terminal Blocks

## Panel or Mounting Track Terminal Blocks

### CR151B

One Piece Terminal Boards for Control Circuit  
600 Volts  
30 Amps

#### Application

These molded terminal boards are for use in wiring of control panels.

A write-on marking strip markable with ink or pencil is included. Terminal boards may be mounted end-to-end without spacing.

#### Features

- Electrical rating—30 amperes, 600 volts.
- Rugged material—phenolic.
- Number of points per board—4, 6, 12, or 13.
- Mounting—may be mounted end-to-end without spacing
- Terminal identification—15/32-inch wide marking strip; markable with ink or pencil.
- Wiring—terminals accept wire sizes through AWG # 10

#### Product Number Selection Instructions

1. Order one piece terminal boards by complete Product Number and by package quantity. Example: Eight (8) six-point, one-piece boards are required, rated 30 amperes, 600 volts with screw-type terminals both sides: order ten CR151B6 at **\$7.20 each, GO-10G5**.

#### Ratings for all Binding Screw and Round Washer Head Screw Terminals

- Suitable for #18 - #10 AWG stranded or solid copper wire, single conductor only.
- Torque 20 in-lb.

#### Ratings for all Wire Clamp Terminals

- Suitable for #18 - #10 AWG stranded or solid copper wire, single or parallel conductors of same size and type (stranded/stranded or solid/solid only).
- Torque 20 in-lb.

#### Parallel two conductor size combinations

Wire Size (AWG)	Torque
#10 with #12	20 in-lb (stranded/stranded or solid/solid wire only)
#12 with #14	20 in-lb (stranded/stranded wire only)
#14 with #16	20 in-lb (stranded/stranded or solid/solid wire only)
#14 with #18	20 in-lb (stranded/stranded wire only)
#16 with #18	20 in-lb (stranded/stranded or solid/solid wire only)

#### Parallel three conductor size combinations

Wire Size	Torque
#14 with #14 with #14	20 in-lb (stranded/stranded/stranded wire only)
#16 with #16 with #16	20 in-lb (stranded/stranded/stranded wire only)
#18 with #18 with #18	20 in-lb (stranded/stranded/stranded wire only)



CR151B, 6-Point Terminal Board

#### Agency Certifications

- UL Recognized, File E40800, Vol. 3, Sec. 2 (Category XCFR2 Terminal Blocks - Component)
- CSA Certified, File LR-15492-157 (Class 3211 07 Industrial Control Equipment - Miscellaneous Apparatus)



# Terminal Blocks Panel or Mounting Track Terminal Boards CR151B

## Section 12

### Panel or Mounting Track Terminal Boards

Termination Type	Terminal Cover	Points Per Board <sup>1</sup>	Product Number <sup>2</sup>	List Price GO-10G5
Screw-Type Both Sides	None	4	CR151B4	\$4.80
Screw-Type Both Sides	None	6	CR151B6	\$7.20
Screw-Type Both Sides	None	12	CR151B2	\$12.90
Screw-Type Both Sides	None	13	CR151B213A	\$14.00
Screw-Type Both Sides	Clear Cover	4	CR151B41AF	\$5.60
Screw-Type Both Sides	Clear Cover	6	CR151B61AF	\$8.20
Screw-Type Both Sides	Clear Cover	12	CR151B21AF	\$14.10
Screw-Type One Side, Wire Clamp Other Side	None	4	CR151B45	\$6.30
Screw-Type One Side, Wire Clamp Other Side	None	6	CR151B65	\$8.10
Screw-Type One Side, Wire Clamp Other Side	None	12	CR151B25	\$15.00
Screw-Type One Side, Wire Clamp Other Side	Clear Cover	4	CR151B45AF	\$7.10
Screw-Type One Side, Wire Clamp Other Side	Clear Cover	6	CR151B65AF	\$9.10
Screw-Type One Side, Wire Clamp Other Side	Clear Cover	12	CR151B25AF	\$16.20
Screw With Wire Clamp Both Sides	None	4	CR151B46	\$7.20
Screw With Wire Clamp Both Sides	None	6	CR151B66	\$9.00
Screw With Wire Clamp Both Sides	None	12	CR151B26	\$16.80
Screw With Wire Clamp Both Sides	None	13	CR151B213B	\$19.00
Screw With Wire Clamp Both Sides	Clear Cover	4	CR151B46AF	\$8.00
Screw With Wire Clamp Both Sides	Clear Cover	6	CR151B66AF	\$10.00
Screw With Wire Clamp Both Sides	Clear Cover	12	CR151B26AF	\$18.00
Washer Head Screw Both Sides	None	4	CR151B40	\$5.40
Washer Head Screw Both Sides	None	6	CR151B60	\$7.80
Washer Head Screw Both Sides	None	12	CR151B20	\$14.10
Washer Head Screw Both Sides	Clear Cover	4	CR151B40AF	\$6.20
Washer Head Screw Both Sides	Clear Cover	6	CR151B60AF	\$8.80
Washer Head Screw Both Sides	Clear Cover	12	CR151B20AF	\$15.30

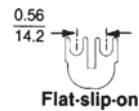
<sup>1</sup>Where number of points desired is not listed use combination of boards.

<sup>2</sup>Product Number and price represent one piece. Sold only in packages of 10. Order in multiples of 10 pieces. Minimum order quantity is 10.

### Accessories

Accessory Type	Description	Product Number	List Price GO-10G5
Jumper	For customer connection of adjacent screw-type terminal board	CR151X301 <sup>3</sup>	\$0.55

<sup>3</sup>Product Number and price represent one piece. Sold only in packages of 100. Order in multiples of 100 pieces. Minimum order quantity is 100.

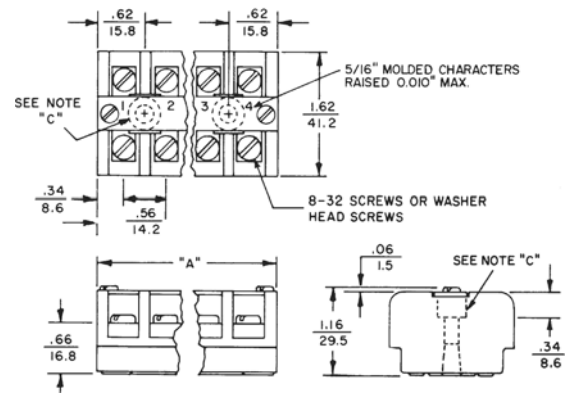


CR151X301 Diagram

### Outlines and Dimensions in. (mm) For Estimating Only

#### Panel or Mounting Track Terminal Boards

Points Per Board	Dimension A	Distance Between Mounting Hole Centers in (mm)	Package (10 units) Shipping Weight, Pounds
4	2.38 (60.4)	1.12 (28.5)	2
6	3.50 (88.9)	2.25 (57.2)	3
12	6.88 (174.8)	5.62 (142.8)	6
13	7.50 (190.5)	6.19 (157.2)	7



Note C: Terminal boards mount with two #8 screws. Mounting holes are located under Marking Strip.



Publications and Reference: See Section 17 for a complete list of additional product-related publications