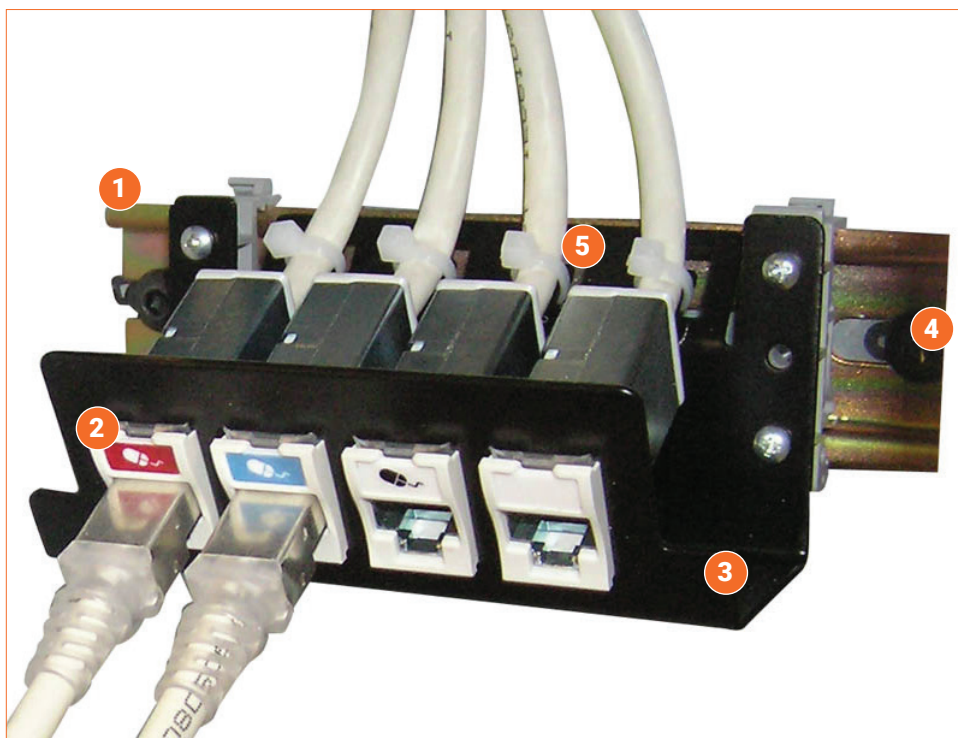


DIN Rail Mounted Patch Panels

Regional Availability — Global



DIN Rail Mounted Patch Panels provide an effective solution for industrial networks inside control panels and distribution cabinets where DIN mounted equipment is used. The modular design accommodates copper, fiber and multi-media modules to support most applications. The low-profile angled design minimizes cable bend radius in shallow enclosures where space is a premium and can be side stackable to grow with your networking changes. The shielded version offers a solution when the panel needs to be grounded accommodating shielded Category 6A or 7A twisted pair copper.



1. Angled Design for Low-Profile Cable Routing

2. Multiple Options

Available for mounting of UltraMAX®, Z-MAX® and TERA® outlets as well as MAX fiber adapter modules.

3. Rugged

Rugged 16 gauge steel construction with a durable black powder finish.

4. Mounting Clips

Compatible with standard 35mm DIN rails.

5. Strain Relief

Cable strain relief to secure and protect connection points.



Applications

- Inside equipment cabinets with DIN rails
- Alongside Industrial Ethernet switches and PLC's

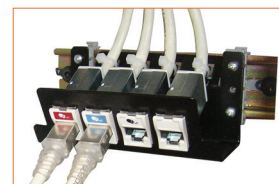
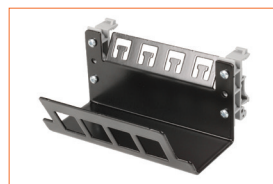
Standards Compliance

- European Standard EN 50022
- IEC International Standard 60715

Ordering Information

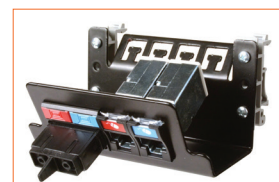
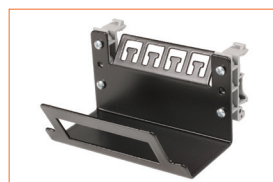
4-Port DIN Rail Patch Panel

Part Number	Description
DIN-PNL-04-01	Black with individual port openings, Includes (4) cable ties



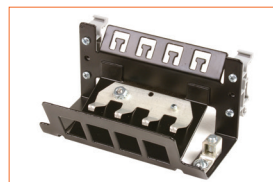
DIN Rail Patch Panel

Part Number	Description
DIN-PNL-04W-01	Black with single opening, Includes (4) cable ties



Shielded 4-Port DIN Rail Patch Panel

Part Number	Description
DIN-PNLS-04-01	Black with discrete openings, Includes (4) cable ties and ground lug sub-assembly



UltraMAX®, Z-MAX® and TERA Outlets

UltraMAX Category 5e, 6 & 6A UTP hybrid outlets; Z-MAX Category 6 UTP and Category 6A UTP and Shielded hybrid outlets; and TERA Category 7A outlets support the full range of copper connectivity requirements.



Z-MAX



UltraMAX

MAX Fiber Adapter Modules

Flat MAX fiber adapter modules, available in LC simplex and SC duplex versions, provide fiber application support.



LC Simplex



SC Duplex

Because we continuously improve our products, Siemon reserves the right to change specifications and availability without prior notice.

North America
P: (1) 860 945 4200

Mexico
P: (521) 556 387 7708/09/10

Latin America
P: (571) 657 1950/51/52

Europe
P: (44) 0 1932 571771

China
P: (86) 215385 0303

India, Middle East & Africa
P: (971) 4 3689743

Asia Pacific
P: (61) 2 8977 7500

Siemon OEM Technologies
P: (1) 860 945 4213
www.siemon.com/OEM