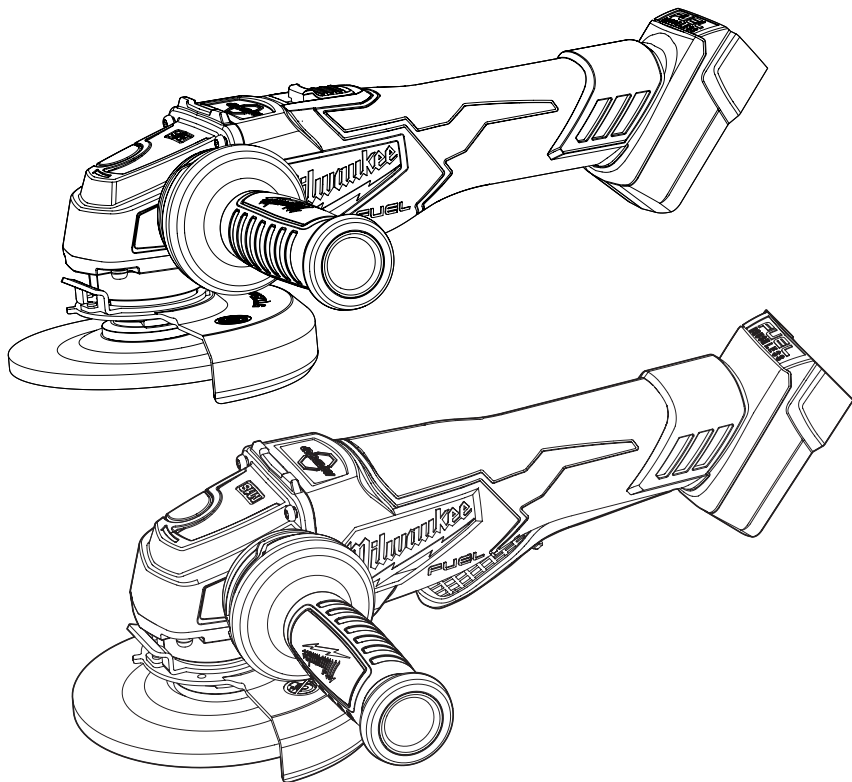




OPERATOR'S MANUAL
MANUEL de L'UTILISATEUR
MANUAL del OPERADOR



Cat. No. / No de Cat.
2880-20, 2881-20

M18 FUEL™ 4-1/2" / 5" BRAKING GRINDER

MEULEUSE À FREIN DE 115 mm / 125 mm (4-1/2" / 5") M18 FUEL™

**ESMERILADORA CON FRENO DE 115 mm / 125 mm (4-1/2" / 5")
M18 FUEL™**




WARNING To reduce the risk of injury, user must read and understand operator's manual.

AVERTISSEMENT Afin de réduire le risque de blessures, l'utilisateur doit lire et bien comprendre le manuel.

ADVERTENCIA Para reducir el riesgo de lesiones, el usuario debe leer y entender el manual.

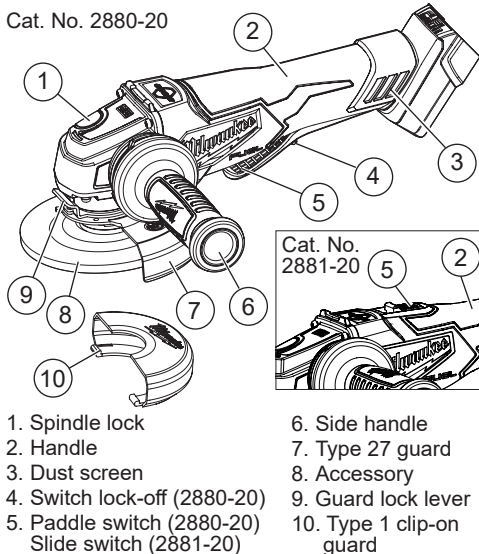
exposure to these chemicals: work in a well ventilated area, and work with approved safety equipment, such as those dust masks that are specially designed to filter out microscopic particles.

SYMBOLLOGY

- V** Volts
--- Direct Current
n XXXX min⁻¹ Rated Revolutions per Minute (RPM)
 Do not use this type of guard for cut-off operations
RAPIDSTOP Tool has RAPIDSTOP™ technology
c UL US UL Listing for Canada and U.S.

FUNCTIONAL DESCRIPTION

Cat. No. 2880-20



1. Spindle lock
2. Handle
3. Dust screen
4. Switch lock-off (2880-20)
5. Paddle switch (2880-20) Slide switch (2880-20)
6. Side handle
7. Type 27 guard
8. Accessory
9. Guard lock lever
10. Type 1 clip-on guard

SPECIFICATIONS

| | |
|---|------------------|
| Cat. No. | 2880-20, 2881-20 |
| Volts | 18 DC |
| Battery Type | M18™ |
| Charger Type | M18™ |
| Rated RPM | 8 500 |
| Spindle Thread Size | 5/8"-11 |
| Max Capacity | 5"x1/4" |
| Recommended Ambient Operating Temperature | 0°F to 125°F |

ASSEMBLY

WARNING Recharge only with the charger specified for the battery. For specific charging instructions, read the operator's manual supplied with the charger and battery.

Removing/Inserting the Battery

To **remove** the battery, push in the release buttons and pull the battery pack away from the tool.

WARNING Always remove the battery pack any time the tool is not in use.

To **insert** the battery, slide the pack into the body of the tool. Make sure it latches securely into place.

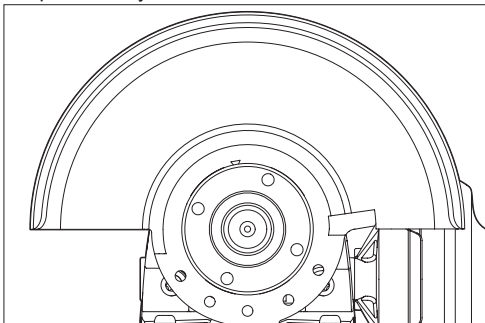
WARNING To reduce the risk of injury when grinding, always use properly installed guards. The guard size and type must match the wheel size and type to provide maximum protection for the operator if the wheel should break.

Only use accessories specifically recommended for this tool. Others may be hazardous.

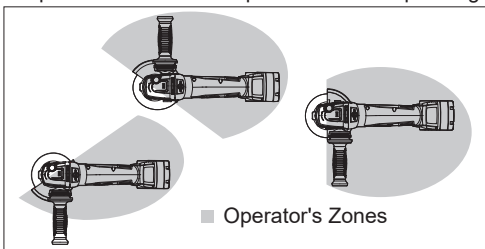
Removing/Installing/Adjusting the Guard

This tool is shipped with a guard. Always use a guard unless otherwise indicated by these instructions.

1. **WARNING!** Remove battery to avoid starting the tool.
2. To **remove** the guard, remove the battery pack and remove any accessories from spindle.
3. Press in the guard lock lever and rotate the guard to line up the tabs on the grinder with the slots in the guard.
4. Press in the lock lever and lift the guard straight up and away from the tool.



5. To **install** the guard, remove the battery pack and remove any accessories from the spindle.
NOTE: Guard size must match wheel size. For example, use 4 1/2" guard only with 4 1/2" wheel and 5" guard only with 5" wheel. (Some guards available as accessories). See "Accessories".
6. Line up the tabs on the grinder with the slots in the guard.
7. Press in the guard lock lever and press the guard onto the tool.
8. To **adjust** the guard, press in the guard lock lever and rotate the guard to one of five detent slots.
WARNING! Always adjust the guard to provide the operator with maximum protection while operating.



■ Operator's Zones