

PRODUCT INFORMATION PACKET

marathon®
Motors

Model No: 5KC46JN0076U

Catalog No: C1292

1/2 HP Auger Drive Motor, 1 phase, 1800 RPM, 115/208-230 V, 56NY Frame, TEFC

Auger Drive Motors



Regal and Marathon are trademarks of Regal Rexnord Corporation or one of its affiliated companies.

©2022 Regal Rexnord Corporation, All Rights Reserved. MC017097E

RegalRexnord

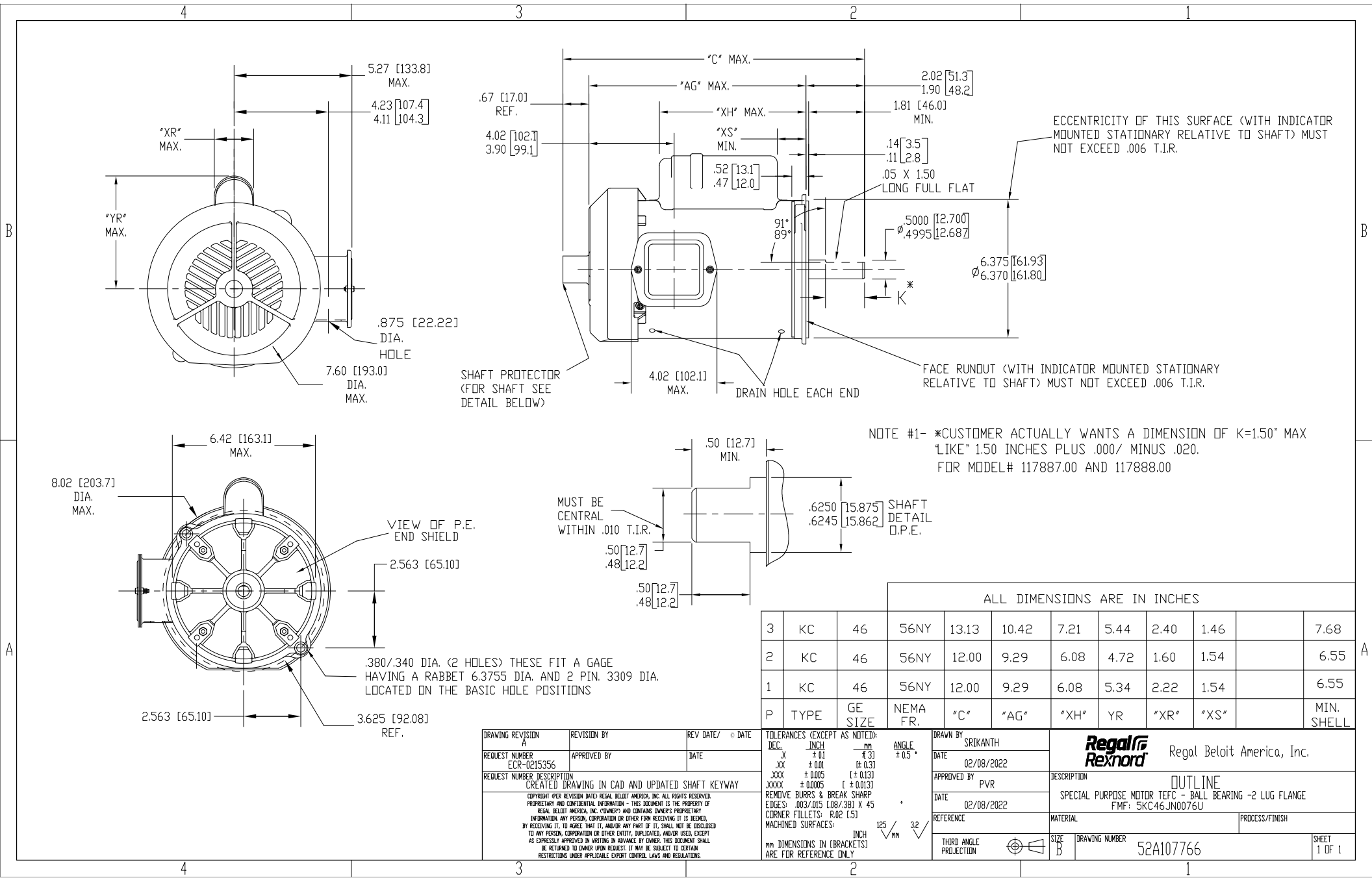
Nameplate Specifications

Output HP	0.50 Hp	Output KW	0.37 kW
Frequency	60 Hz	Voltage	115/208-230 V
Current	8.4,4.0-4.2 A	Speed	1725/1425 rpm
Service Factor	1.25	Phase	1
Efficiency	63.2 %	Power Factor	0
Duty	Continuous	Insulation Class	B
KVA Code	M	Frame	56NY
Enclosure	Totally Enclosed Fan Cooled	Thermal Protection	MAN
Ambient Temperature	40 °C	Drive End Bearing Size	6203
Opp Drive End Bearing Size	6203	UL	Recognized
CSA	Yes	CE	N
Number of Speeds	1		

Technical Specifications

Electrical Type	Capacitor Start Induction Run	Starting Method	SM
Poles	4	Rotation	Counterclockwise/Clockwise
Mounting	Round	Motor Orientation	ANY
Drive End Bearing	BALL	Opp Drive End Bearing	Ball
Frame Material	Rolled Steel	Overall Length	12 in
Frame Length	6.55 in	Shaft Diameter	0.500 in
Shaft Extension	1.81 in		
Connection Drawing	52A105383BA	Outline Drawing	52A107766P1

This is an uncontrolled document once printed or downloaded and is subject to change without notice. Date Created:02/12/2022



DRAWING REVISION A	REVISION BY	REV DATE / © DATE
REQUEST NUMBER ECR-0215356	APPROVED BY	DATE
REQUEST NUMBER DESCRIPTION CREATED DRAWING IN CAD AND UPDATED SHAFT KEYWAY		
COPYRIGHT (PER REVISION DATE) REGAL BELLOIT AMERICA, INC. ALL RIGHTS RESERVED. PROPRIETARY AND CONFIDENTIAL INFORMATION - THIS DOCUMENT IS THE PROPERTY OF REGAL BELLOIT AMERICA, INC. (OWNER) AND CONTAINS OWNER'S PROPRIETARY INFORMATION. ANY PERSON, CORPORATION OR OTHER FIRM RECEIVING IT IS DEEMED BY RECEIVING IT, TO AGREE THAT IT, AND/OR ANY PART OF IT, SHALL NOT BE DISCLOSED TO ANY PERSON, CORPORATION OR OTHER ENTITY, DUPLICATED, AND/OR USED, EXCEPT AS EXPRESSLY APPROVED IN WRITING IN ADVANCE BY OWNER. THIS DOCUMENT SHALL BE RETURNED TO OWNER UPON REQUEST. IT MAY BE SUBJECT TO CERTAIN RESTRICTIONS UNDER APPLICABLE EXPORT CONTROL LAWS AND REGULATIONS.		

TOLERANCES (EXCEPT AS NOTED): DEC. INCH mm .X ± .01 ± .3 .XX ± .01 ± .3 .XXX ± .005 ± .013 .XXXX ± .0005 ± .013		ANGLE ± .5°		DRAWN BY SRIKANTH		DATE 02/08/2022		Regal Rexnord Regal Beloit America, Inc.	
REMOVE BURRS & BREAK SHARP EDGES: .003/.015 (.08/.38) X 45° CORNER FILLETS: R.02 (.5)		MACHINED SURFACES: 125 32		APPROVED BY PVR		DATE 02/08/2022		DESCRIPTION OUTLINE SPECIAL PURPOSE MOTOR TEFC - BALL BEARING -2 LUG FLANGE FMF: 5KC46JN0076U	
THIRD ANGLE PROJECTION		SIZE B		DRAWING NUMBER 52A107766		SHEET 1 OF 1			

THIRD ANGLE PROJECTION

REV. 7

SIZE DRAWING NO. 52A105383BA

REVISIONS

REV.	DESCRIPTION	DATE	APPROVED
7	UPDATED FORMAT	01/05/06	MAM

CCW/CW ROTATION - DUAL VOLTAGE

TYPE KC , KH OR KCR - WITH THERMAL PROTECTOR

START

EX START

(WHEN SPEC.)

T5 OR BLACK

J9 OR BLACK

J11 OR BROWN

J12 OR PURPLE

T4 OR YELLOW

T2 OR WHITE

MAIN

MAIN

T1 OR BLUE

T3 OR ORANGE

T8 OR RED

CAPACITOR AS SHOWN FOR KC MOTORS ONLY. LEAD T5 BLACK CONNECTED DIRECTLY TO TERMINAL BOARD FOR KH MOTORS.

A

E

J10 OR BLACK

P2 OR BROWN

THERMAL PROTECTOR

T1 OR BLUE

T3 OR ORANGE

T8 OR RED

GROUND

(WHEN REQ'D)

L0 VOLTAGE LINE

P1 OR PURPLE

START

EX START

(WHEN SPEC.)

T5 OR BLACK

J9 OR BLACK

J11 OR BROWN

J12 OR PURPLE

T4 OR YELLOW

T2 OR WHITE

MAIN

MAIN

T1 OR BLUE

T3 OR ORANGE

T8 OR RED

CAPACITOR AS SHOWN FOR KC MOTORS ONLY. LEAD T5 BLACK CONNECTED DIRECTLY TO TERMINAL BOARD FOR KH MOTORS.

A

E

J10 OR BLACK

P2 OR BROWN

THERMAL PROTECTOR

T1 OR BLUE

T3 OR ORANGE

T8 OR RED

GROUND

(WHEN REQ'D)

H1 VOLTAGE LINE

TAPE

P2 OR BROWN

P1 OR PURPLE

NOTE#1 - TO REVERSE ROTATION, INTERCHANGE T8 RED AND J10 BLACK LEADS.

NOTE#2 - WHEN MORE THAN ONE CAPACITOR IS USED, CONNECT IN PARALLEL.

NOTE#3 - 115D958ABP5 - HIGH CURRENT CONTACTS.

SWITCH (C) - 115D958ABP5, SWITCH (H) - 115D958AA (USE 115D958DA FOR EP)

REF. DIAG. - 113A327,119A9352 & 52A102102

CONNECTION LABEL - 52X332912

SIGNATURES

DATE

MODEL

M.D.P.

06/29/87

DETAIL

.

.

CHECKED

.

.

ENGRG

.

.

MFG

.

.

QUALITY

.

.

ISSUED

M.D.P.

12/11/97

SOLID MODEL: 52A105383BA

REGAL-BELOIT CORPORATION

TITLE

CONNECTION DIAGRAM

FMF: 30 FRAME SWITCH REDESIGN

SIZE A

DRAWING

52A105383BA

REV 7

SCALE: 1.000

REF. No: .

SHEET 1 of 1

4 of 4