

# PRODUCT INFORMATION PACKET



Model No: BDH1036

Catalog No: BDH1036

Fan and Blower Motor, 1/3 HP, 1 Ph, 60 Hz, 460 V, 1075 RPM, 2 Speed, 48 Frame, SEMI ENCLOSED



Regal and Century are trademarks of Regal Rexnord Corporation or one of its affiliated companies.

©2024 Regal Rexnord Corporation, All Rights Reserved. MC017097E





### Nameplate Specifications

Phase	1	Output HP	1/3 Hp
Output KW	0.25 kW	Voltage	460 V
Speed	1075 rpm	Service Factor	1
Frame	48Y	Enclosure	Semi Enclosed
Thermal Protection	Automatic	Ambient Temperature	60 °C
Frequency	60 Hz	Current	1.2 A
Duty	Air Over	Insulation Class	B
UL	Recognized	CSA	Y
CE	N	Number of Speeds	2

### Technical Specifications

Electrical Type	Permanent Split Capacitor	Starting Method	Across The Line
Poles	6	Rotation	Reversible
Mounting	Extended Studs	Motor Orientation	Any
Drive End Bearing	Ball	Opp Drive End Bearing	Ball
Frame Material	Rolled Steel	Shaft Type	Double Flat
Overall Length	11.93 in	Frame Length	4.50 in
Shaft Diameter	0.500 in	Shaft Extension	6.4 in
Outline Drawing	BDH1036-S01	Connection Drawing	614131-244

This is an uncontrolled document once printed or downloaded and is subject to change without notice. Date Created:11/27/2024

# GENERAL INFORMATION:

SHAFT RUNOUT: .001 [.03] T.I.R. PER INCH LENGTH OF EXTENSION

BEARINGS: BALL

MOUNTING POSITION: HORIZONTAL OR VERTICAL SHAFT UP

# ELECTRICAL DATA:

OVERLOAD PROTECTOR: AUTOMATIC RESET (T.I. 7AM 036)

LEADS: NO. 18 GA., .06 [1.5] THK. PVC 105°C INSUL.

REVERSING PLUGS: NO. 18 GA., .03 [.8] THK. XLP 125°C INSUL.

GROUND LEAD: NO. 18 GA., .03 [.8] THK. (GREEN) INSUL.

# NAMEPLATE DATA:

MODEL NO.: F48U68A01  
CUST. P/N: SEE NOTE 2  
HP: 1/3  
ROT.: REVERSIBLE  
RPM: 1075/2 SPD.  
TYPE: UF  
FRAME: 48Y  
VOLTS: 460  
PH: 1  
AMPS: 1.2  
HZ: 60  
INS.: B  
AMB.: 60° C  
DUTY: AIR OVER  
CAP.: 7.5 MFD/370 V  
ENCL: SEMI-ENCL.  
UL LOGO  
CSA LOGO  
THERMALLY PROTECTED

# EXTERNAL CONNECTION DIAGRAM

BROWN SEP. CAP.  
YELLOW ⊕  
BLACK LINE  
ORANGE HIGH  
RED SPEED

BROWN SEP. CAP.  
YELLOW ⊕  
BLACK LO LINE  
ORANGE  
RED SPEED

ROTATION  
BLACK WHITE  
WHITE BLACK  
CCWLE  
CWLE

614131-244

PERFORMANCE CURVE NO.	TORQUE @ 1075 RPM (25°C)	APPROVED SAMPLE	UL COMPONENT	CSA
C31855	35.2 OZ. FT.	99AC234A	FILE # CCN # FILE # CLASS #	E46412 PRGY2 LR43341 4211-01

GEOMETRIC CHARACTERISTICS & SYMBOLS
FLATNESS
STRAIGHTNESS
ANGULARITY
PERPENDICULARITY (SQUARENESS)
PARALLELISM
ROUNDNESS (CIRCULARITY)
CYLINDRICITY
PROFILE OF ANY SURFACE
PROFILE OF ANY LINE
RUNOUT
TRUE POSITION
CONCENTRICITY
SYMMETRY

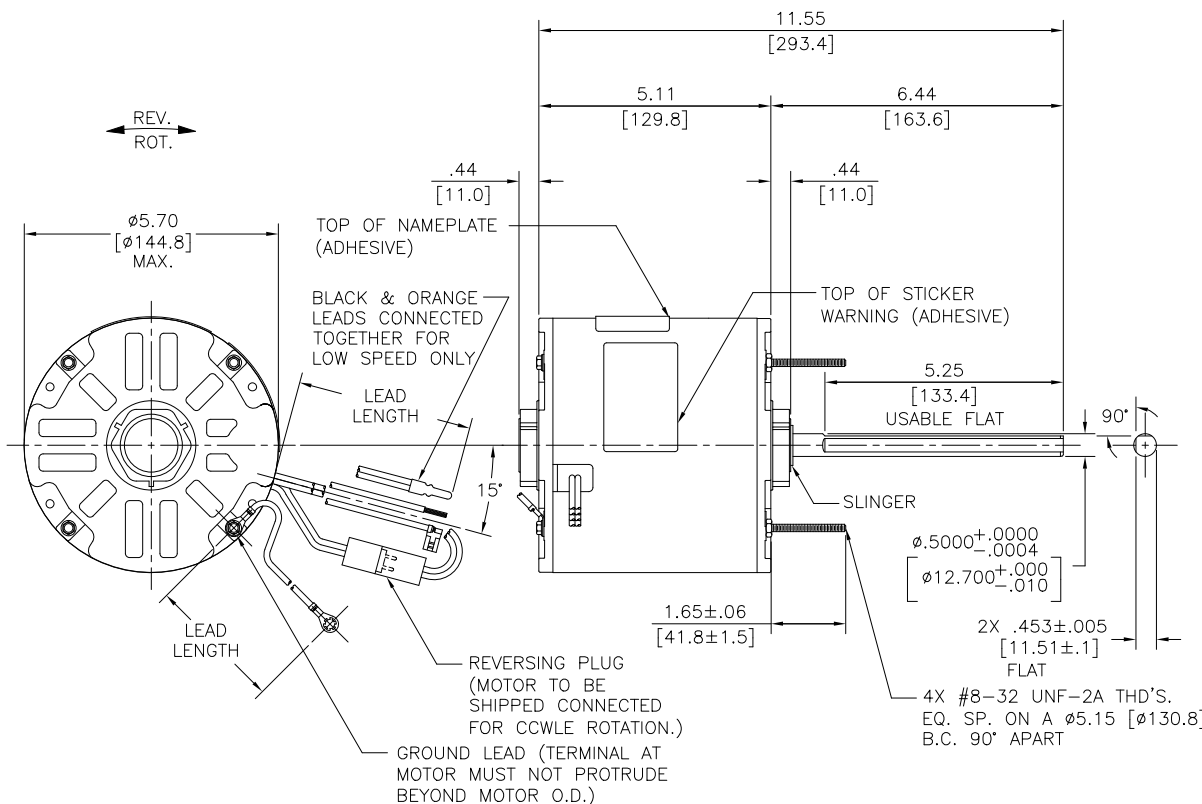
ASME Y14.5M 1994

UNLESS OTHERWISE SPECIFIED DIM. TOLERANCES ARE AS FOLLOWS:  
INCH ±.1 ±.02 ±.005 ±.0005  
mm ±0.5 ±0.13 ±0.013  
ANG. ±.50 DEG  
REMOVE BURRS & BREAK SHARP EDGES:  
INCH .003-.015 mm 0.1-0.4  
CORNER FILLETS TO:  
INCH .020 mm 0.5  
MACHINE SURFACES:  
INCH 125 mm 3.2  
METRIC DIMS. SHOWN IN [BRACKETS]

DR BY: JRUPERT	05-09-2011
APPD: JRUPERT	05-09-2011
THIRD ANGLE PROJECTION	EDS DATE 11-11-2011 FORMAT REV G
CONFIDENTIAL: THIS DRAWING AND ITS INFORMATION ARE THE EXCLUSIVE AND CONFIDENTIAL PROPERTY OF REGAL-BELOIT CORPORATION AND ARE NOT TO BE DISCLOSED, DUPLICATED, DISTRIBUTED OR OTHERWISE USED WITHOUT THE WRITTEN CONSENT OF REGAL-BELOIT CORPORATION. -ALL RIGHTS RESERVED.	

REGAL-BELOIT CORPORATION	
DESCRIPTION	
SIZE C	DWG NO BDH1036
SCALE NONE	SHEET 1

REV	ECO	REV BY	DATE	APPD	DATE
BA	ECR-0238477	ANJANI	11-11-2024	KEP	11-11-2024



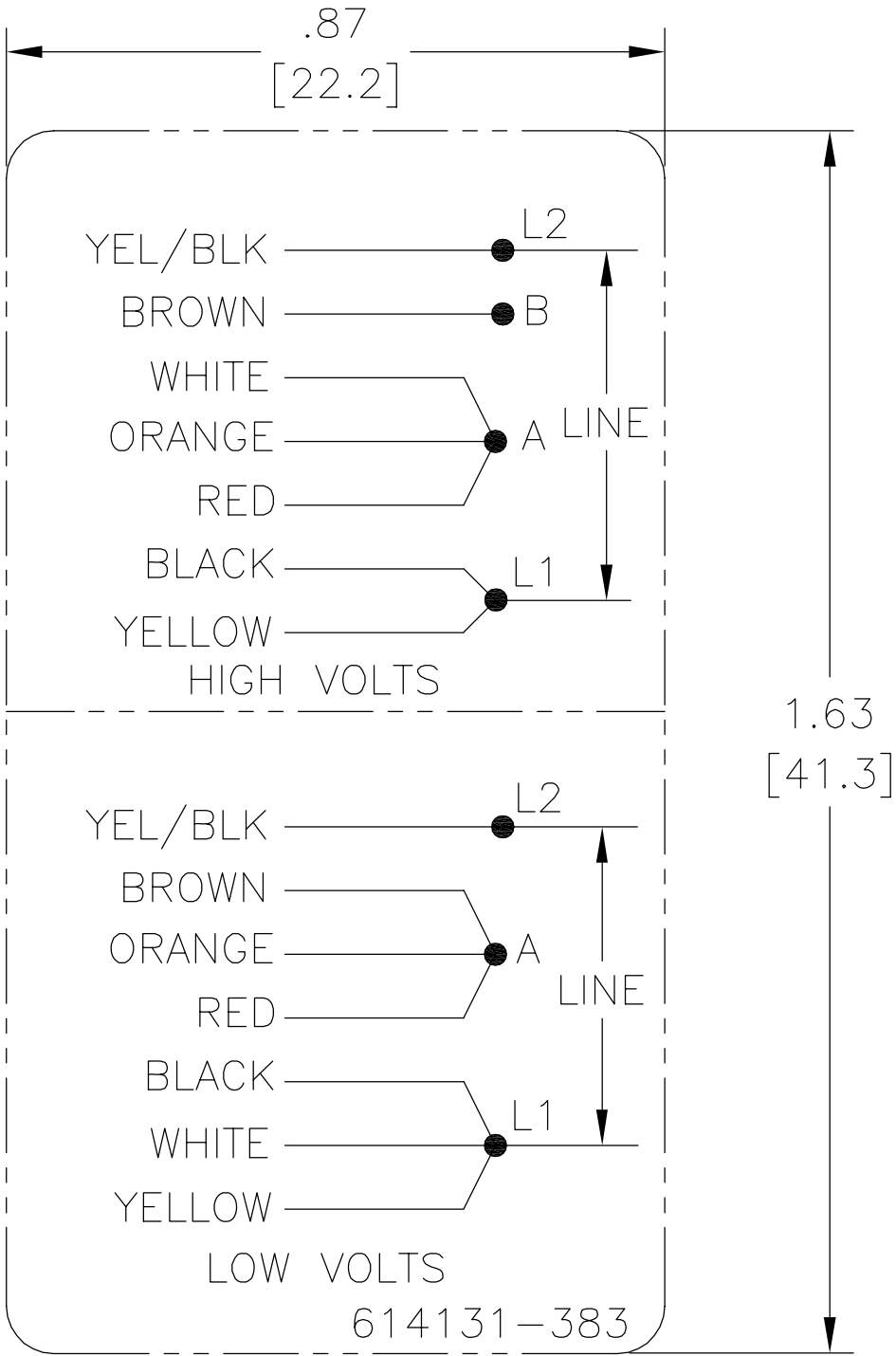
# NOTES:

- (1) CAPACITOR 628316-312 TO BE PACKED SEPARATE WITH EACH MOTOR.
- DISTRIBUTION SERVICE CUST. P/N: BDH1036  
GRAINGER CUST. P/N: 4MB93.

MAIN FRAME - OLE	ENCLOSED
END FRAME - OLE	OPEN
MAIN FRAME - LE	ENCLOSED
END FRAME - LE	OPEN

CUSTOMER	DISTRIBUTION SERVICE
----------	----------------------

REV	ECO	REV BY	DATE	APPD	DATE
C	ECO-0022540	jrupert	09-21-2011	jrupert	09-21-2011




NOTES:

1. FOR USE WITH 614129 NAMEPLATE BLANK
2. — — — — — INDICATES DIMENSION LIMITS
3. DIE TO BE MADE FROM MASTER SUPPLIED BY A. O. SMITH CORPORATION
4. DIE MUST PRODUCE A LEGIBLE IMPRESSION.

GEOMETRIC CHARACTERISTICS & SYMBOLS  
/ FLATNESS  
— STRAIGHTNESS  
∠ ANGULARITY  
⊥ PERPENDICULARITY (SQUARENESS)  
// PARALLELISM  
○ ROUNDNESS (CIRCULARITY)  
⌀ CYLINDRICITY  
△ PROFILE OF ANY SURFACE  
⌒ PROFILE OF ANY LINE  
↑ RUNOUT  
⊕ TRUE POSITION  
◎ CONCENTRICITY  
≡ SYMMETRY

UNLESS OTHERWISE SPECIFIED  
DIM. TOLERANCES ARE AS FOLLOWS:  
INCH X XX XXX XXXX  
mm ±.1 ±.02 ±.005 ±.0005  
mm ±0.5 ±0.13 ±0.013  
ANG. ±.50 DEG  
REMOVE BURRS & BREAK SHARP EDGES:  
INCH .003-.015 mm 0.1-0.4  
CORNER FILLETS TO:  
INCH .020 mm 0.5  
MACHINE SURFACES:  
INCH 125 mm 3.2  
METRIC DIMS. SHOWN IN [BRACKETS]

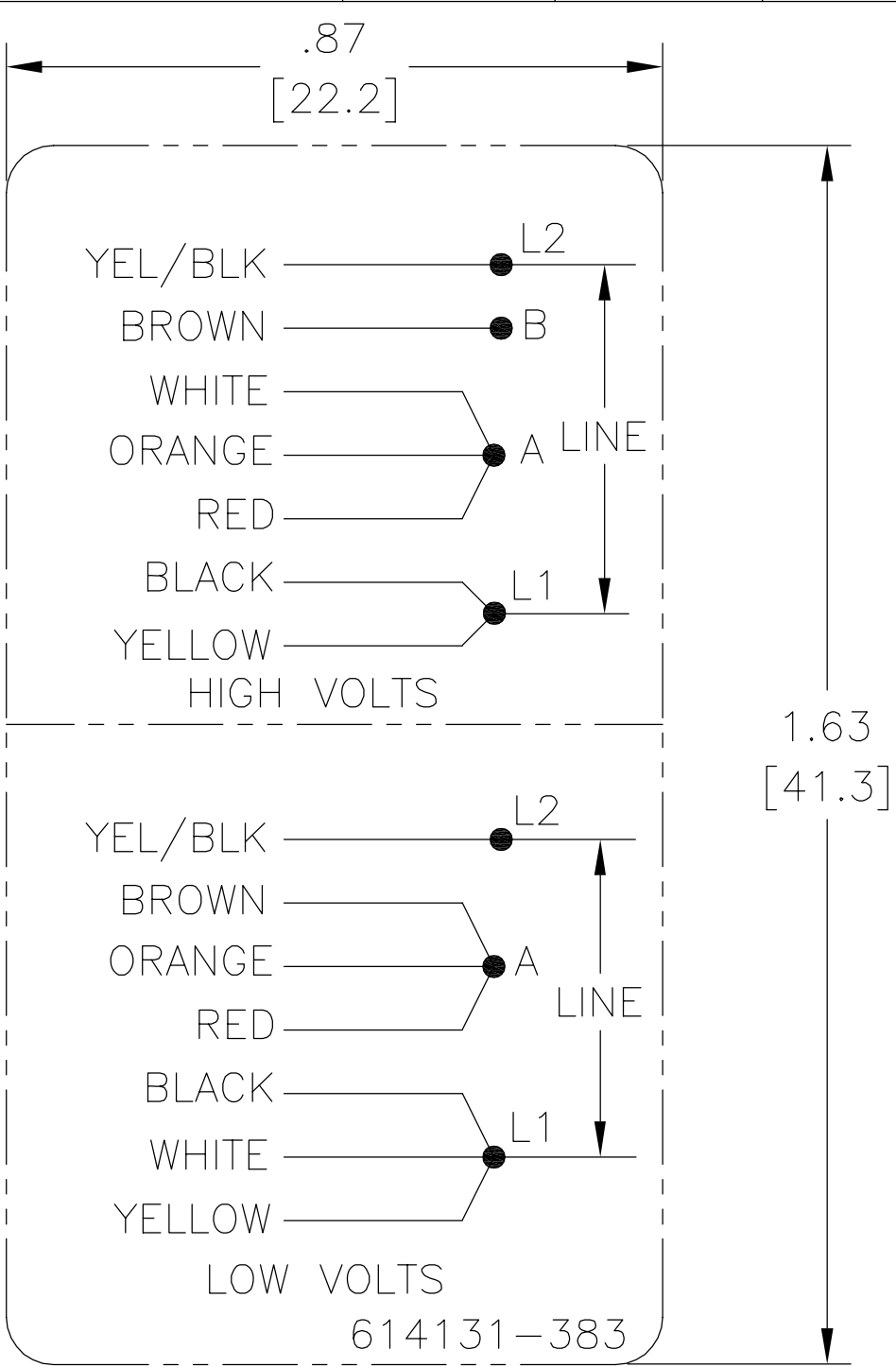
DR BY:	jrupert	09-21-2011
APPD:	jrupert	09-21-2011
THIRD ANGLE PROJECTION	⊕	EDS DATE 02-22-2008 FORMAT REV F
CONFIDENTIAL: THIS DRAWING AND ITS INFORMATION ARE THE EXCLUSIVE AND CONFIDENTIAL PROPERTY OF A.O. SMITH CORP. AND ARE NOT TO BE DISCLOSED, DUPLICATED, DISTRIBUTED OR OTHERWISE USED WITHOUT THE WRITTEN CONSENT OF A.O. SMITH CORP. -ALL RIGHTS RESERVED. ASME Y14.5M 1994		



**ELECTRICAL PRODUCTS COMPANY**  
A DIVISION OF A. O. SMITH CORPORATION


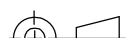
DESCRIPTION CONN DIAGRAM NAMEPLATE		
SIZE A	DWG NO 614131-383	
SCALE NONE		SHEET 1

REVISION:	ECO	REVISADO POR:	FECHA:	APROBADO POR:	FECHA:
C	ECO-0022540	jrupert	09-21-2011	jrupert	09-21-2011

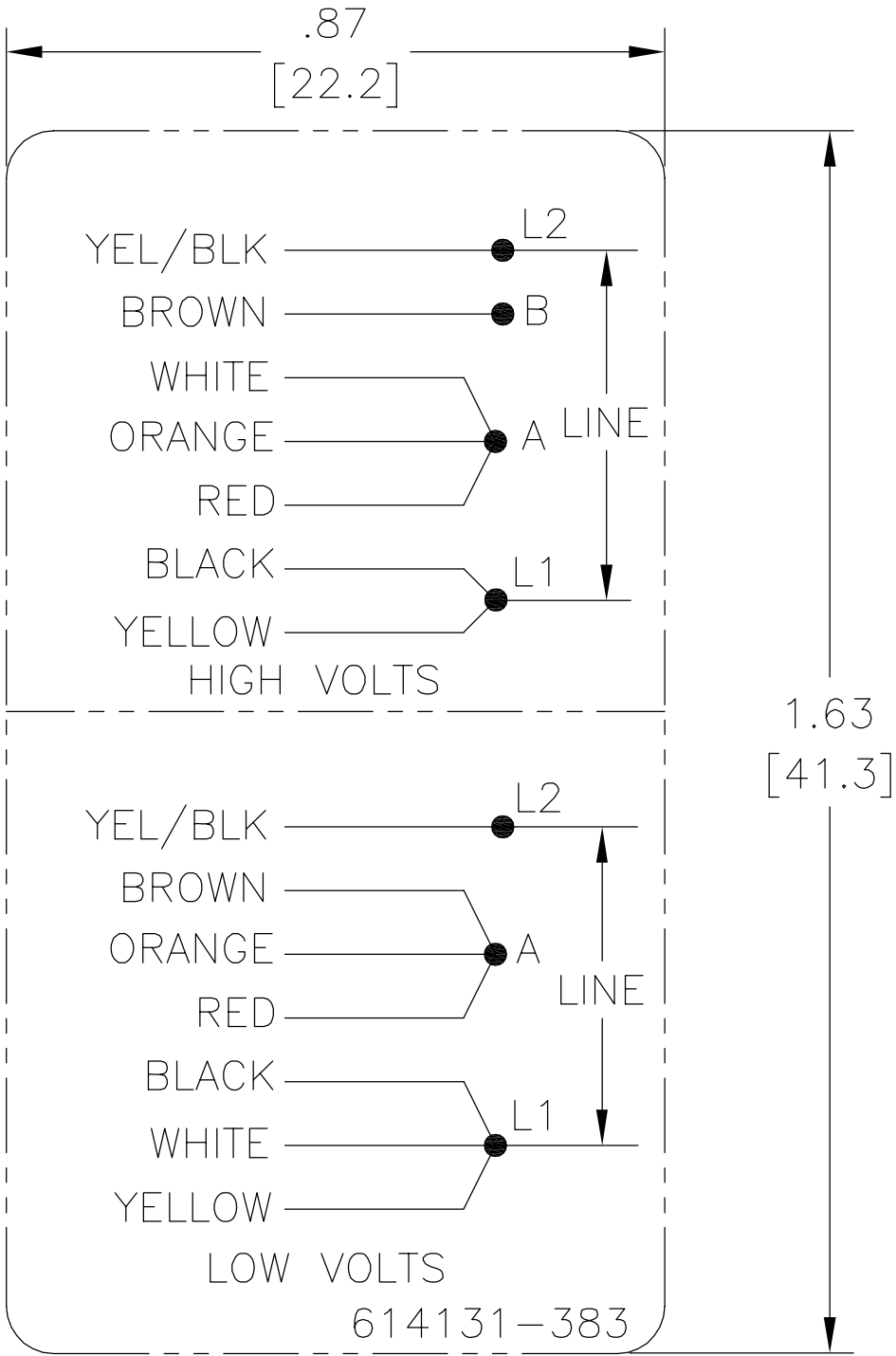


NOTES:

1. FOR USE WITH 614129 NAMEPLATE BLANK
2. — — — — — INDICATES DIMENSION LIMITS
3. DIE TO BE MADE FROM MASTER SUPPLIED BY A. O. SMITH CORPORATION
4. DIE MUST PRODUCE A LEGIBLE IMPRESSION.

CARACTERISTICAS DE GEOMETRIA Y SIMBOLOS ∇ PLANICIDAD — RECTITUD ∠ ANGULARIDAD ⊥ PERPENDICULARIDAD (A ESCUADRA) // PARALELISMO ○ REDONDEZ (CIRCULARIDAD) ⌀ CILINDRICIDAD ⌒ PERFIL DE CUALQUIER SUPERFICIE ⌒ PERFIL DE CUALQUIER LINEA ↑ VARIACION ⊕ POSICION REAL ◎ CONCENTRICIDAD ≡ SIMETRIA	A MENOS QUE SE ESPECIFIQUE DE OTRA MANERA, LAS TOLERANCIAS DE LAS DIMS. SON LAS SIGUIENTES: X XX XXX XXXX PULG ±.1 ±.02 ±.005 ±.0005 mm ±0.5 ±0.13 ±0.013 ANG. ±.50 GRADOS ELIMINAR REBABAS Y ORILLAS FILOSAS DEL BORDE. PULG .003-.015 mm 0.1-0.4 FILETEAR ESQUINA: PULG .020 mm 0.5 MAQUINAR SUPERFICIES PULG 125 mm 3.2 DIMS METRICAS MOSTRADAS [PARENTESIS]	DIBUJADO POR: jrupert	09-21-2011	 <b>ELECTRICAL PRODUCTS COMPANY</b> Innovation has a name. A DIVISION OF A. O. SMITH CORPORATION		
		APROBADO POR: jrupert	09-21-2011			
		TERCER ANGULO DE PROYECCION		FECHA EDS: 02-22-2008 REV. FORMATO: F	DESCRIPCION: CONN DIAGRAM NAMEPLATE	
		CONFIDENCIAL: ESTE DIBUJO Y SU INFORMACION SON PROPIEDAD DE USO EXCLUSIVO Y CONFIDENCIAL DE A.O.SMITH CORP. Y NO DEBERAN SER REVELADOS, DUPLICADOS, DISTRIBUIDOS O USARSE DE OTRA MANERA SIN EL CONSENTIMIENTO ESCRITO DE A.O. SMITH CORP. -TODOS LOS DERECHOS RESERVADOS.ASME Y14.5M 1994			TAMAÑO: A	NUMERO DE DIBUJO: 614131-383
					ESCALA:NONE	

??	ECO	??	??	??	??
C	ECO-0022540	jrupert	09-21-2011	jrupert	09-21-2011



- NOTES:
1. FOR USE WITH 614129 NAMEPLATE BLANK
  2. — — — — — INDICATES DIMENSION LIMITS
  3. DIE TO BE MADE FROM MASTER SUPPLIED BY A. O. SMITH CORPORATION
  4. DIE MUST PRODUCE A LEGIBLE IMPRESSION.

<div>????? □???? —???? ∠???? ⊥???? //???? ○???? ⊗???? △???? ∩???? ↑???? ⊕???? ⊙???? ≡????</div>	<div>????? ???????</div> <div>?? X XX XXX XXXX ?? ±.1 ±.02 ±.005 ±.0005 ?? ±0.5 ±0.13 ±0.013 ?? ±.50 ? ???????</div> <div>?? .003-.015 ?? 0.1-0.4 ?? ?? .020 ?? 0.5 ????? ?? 125 ?? 3.2 ??????[ ]</div>	<div>?:</div> <div>jrupert</div>	<div>09-21-2011</div>	<div><div>ACSmith</div><div>Innovation has a name.</div></div> <div>ELECTRICAL PRODUCTS COMPANY</div> <div>A DIVISION OF A. O. SMITH CORPORATION</div>			
		<div>?:</div> <div>jrupert</div>	<div>09-21-2011</div>				
		<div>?????</div>	<div><div><div><div></div><div></div></div><div></div></div><div>???????</div><div>02-22-2008</div><div>???????</div><div>F</div></div>	<div>CONN DIAGRAM NAMEPLATE</div>			
		<div>?: ?????????????A.O.SMITH?????</div> <div>??A.O.SMITH????????????????????</div> <div>??????—?????</div>					
		<div>ASME Y14.5M 1994</div>				<div>??</div> <div>A</div>	<div>??</div> <div>614131-383</div>