

PRODUCT INFORMATION PACKET



Model No: BDH1076

Catalog No: BDH1076

Fan and Blower Motor, 3/4 HP, 1 Ph, 60 Hz, 460 V, 1075 RPM, 2 Speed, 48 Frame, SEMI ENCLOSED



Regal and Century are trademarks of Regal Rexnord Corporation or one of its affiliated companies.

©2024 Regal Rexnord Corporation, All Rights Reserved. MC017097E





Nameplate Specifications

Phase	1	Output HP	3/4 Hp
Output KW	0.56 kW	Voltage	460 V
Speed	1075 rpm	Service Factor	1
Frame	48Y	Enclosure	Semi Enclosed
Thermal Protection	Automatic	Ambient Temperature	60 °C
Frequency	60 Hz	Current	2.2 A
Duty	Air Over	Insulation Class	B
UL	Recognized	CSA	Y
CE	N	Number of Speeds	2

Technical Specifications

Electrical Type	Permanent Split Capacitor	Starting Method	Across The Line
Poles	6	Rotation	Reversible
Mounting	Extended Studs	Motor Orientation	Horizontal
Drive End Bearing	Ball	Opp Drive End Bearing	Ball
Frame Material	Rolled Steel	Shaft Type	Flat
Overall Length	12.61 in	Frame Length	5.13 in
Shaft Diameter	0.500 in	Shaft Extension	6.4 in
Connection Drawing	614131-244	Outline Drawing	BDH1076-S01

This is an uncontrolled document once printed or downloaded and is subject to change without notice. Date Created:11/27/2024

GENERAL INFORMATION:

SHAFT RUNOUT: .001 [.03] T.I.R. PER INCH LENGTH OF EXTENSION

BEARINGS: BALL

MOUNTING POSITION: HORIZONTAL

ELECTRICAL DATA:

OVERLOAD PROTECTOR: AUTOMATIC RESET (SENSATA 7AM 036)

LEADS: NO. 18 GA., .06 [1.5] THK. PVC 105°C INSUL.

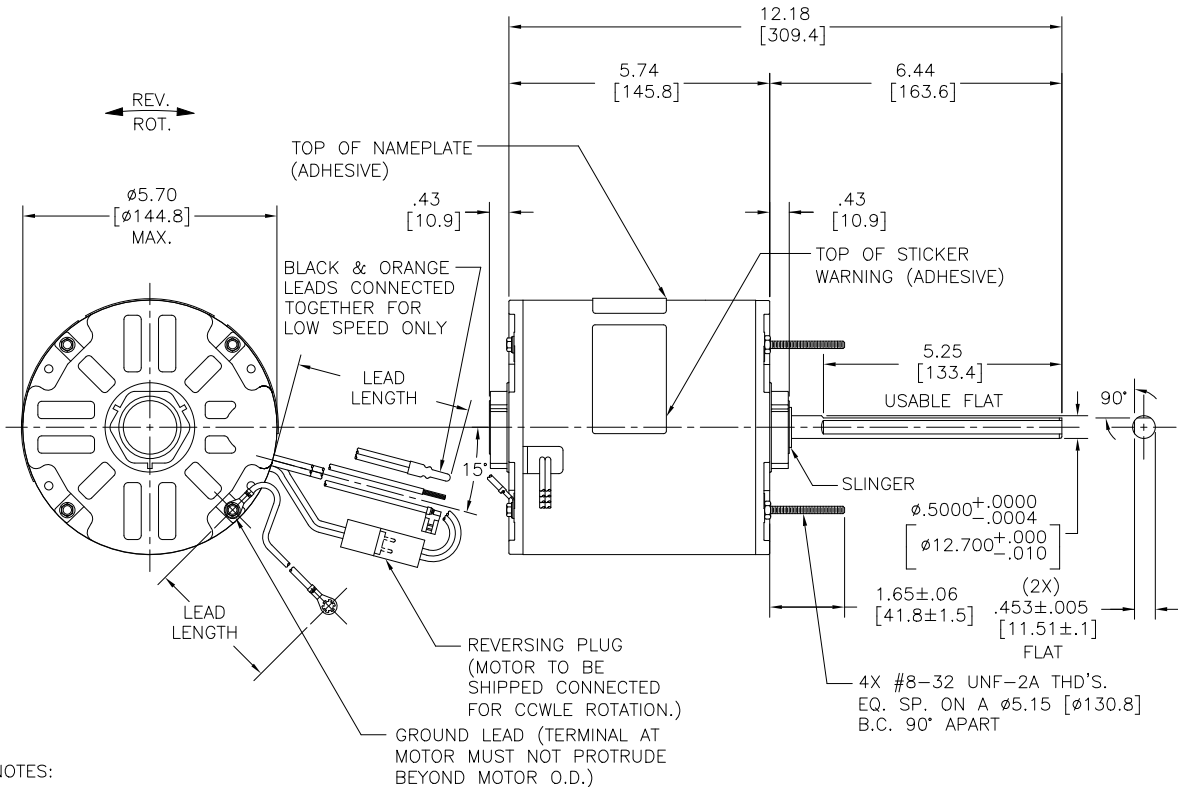
REVERSING PLUGS: NO. 18 GA., .03 [.8] THK. XLP 125°C INSUL.

GROUND LEAD: NO. 18 GA., .03 [.8] THK. (GREEN) INSUL.

NAMEPLATE DATA:	EXTERNAL CONNECTION DIAGRAM
MODEL NO.: F48U70A01 CUST. P/N: SEE NOTE 2 HP: 3/4 ROT.: REVERSIBLE RPM: 1075/2 SPD. TYPE: UF FRAME: 48Y VOLTS: 460 PH: 1 AMPS: 2.2 HZ: 60 INS.: B AMB.: 60° C DUTY: AIR OVER CAP.: 15 MFD/370 V ENCL: SEMI-ENCL. UL LOGO CSA LOGO THERMALLY PROTECTED	<div><div>BROWN YELLOW BLACK ORANGE RED</div><div>SEP. CAP. LINE HIGH SPEED</div></div> <div><div>BROWN YELLOW BLACK ORANGE RED</div><div>SEP. CAP. LINE LO SPEED</div></div> <div><div>BLACK WHITE BLACK WHITE</div><div>ROTATION CCWLE CWLE</div><div>BLACK WHITE WHITE BLACK</div></div>

614131-244

PERFORMANCE CURVE NO.	TORQUE @ 1075 RPM (25°C)	APPROVED SAMPLE	UL COMPONENT	CSA
C31856	67.9 OZ. FT.	99AC220A	FILE # CCN # FILE # CLASS #	
			E46412 PRGY2 LR43341 4211-01	



NOTES:

- (1) CAPACITOR 628316-317 TO BE PACKED SEPARATE WITH EACH MOTOR.
- DISTRIBUTION SERVICE CUST. P/N: BDH1076 GRAINGER CUST. P/N: 4MB97.
- THE SYMBOL OF CTQ: ▲ (NO CTQ ON THIS DRAWING)
- MEET THE REQUIREMENT OF ROHS AND REACH: SEE EP000014_5.1

GREEN (GROUND)	12.0/13.0 [305/330]	#10 EYELET
BLACK/WHITE	3.0/5.0 [76/127]	REVERSING PLUG
BROWN	26.0/28.0 [660/711]	.25 [6.4] FLAG
YELLOW	26.0/28.0 [660/711]	.60 [15.2] SKIN
BLACK	26.0/28.0 [660/711]	.60 [15.2] SKIN
ORANGE	26.0/28.0 [660/711]	.60 [15.2] SKIN
RED	26.0/28.0 [660/711]	.60 [15.2] SKIN
COLOR	LENGTH	TERMINAL OR STRIP LENGTH

LEAD DATA

DRAWING REVISION	REVISION BY	DATE
FA	ANJANI	11-11-2024
ECO	APPROVED BY	DATE
ECR-0238477	KEP	11-11-2024
ECO DESCRIPTION		
REMOVED CONSERVATION LABEL AS PER ECR		
COPYRIGHT REGAL BELOIT AMERICA, INC. ALL RIGHTS RESERVED. PROPRIETARY AND CONFIDENTIAL INFORMATION - THIS DOCUMENT IS THE PROPERTY OF REGAL BELOIT AMERICA, INC. (OWNER) AND CONTAINS OWNER'S PROPRIETARY INFORMATION. ANY PERSON, CORPORATION OR OTHER ENTITY, DUPLICATED, AND/OR USED, BY RECEIVING IT, TO AGREE THAT IT, AND/OR ANY PART OF IT, SHALL NOT BE DISCLOSED TO ANY PERSON, CORPORATION OR OTHER ENTITY, DUPLICATED, AND/OR USED, EXCEPT AS EXPRESSLY APPROVED IN WRITING IN ADVANCE BY OWNER. THIS DOCUMENT SHALL BE RETURNED TO OWNER UPON REQUEST. IT MAY BE SUBJECT TO CERTAIN RESTRICTIONS UNDER APPLICABLE EXPORT CONTROL LAWS AND REGULATIONS.		

REGAL-BELOIT CORPORATION (RBC) PROVIDES TECHNICAL ASSISTANCE TO OUR CUSTOMERS IN SEVERAL AREAS. SINCE RBC DOES NOT RECEIVE ALL DATA CONCERNING THE USE AND APPLICATION OF THE MOTOR, THE SUITABILITY OF THE MOTOR FOR THE APPLICATION MUST BE DETERMINED BY THE CUSTOMER.

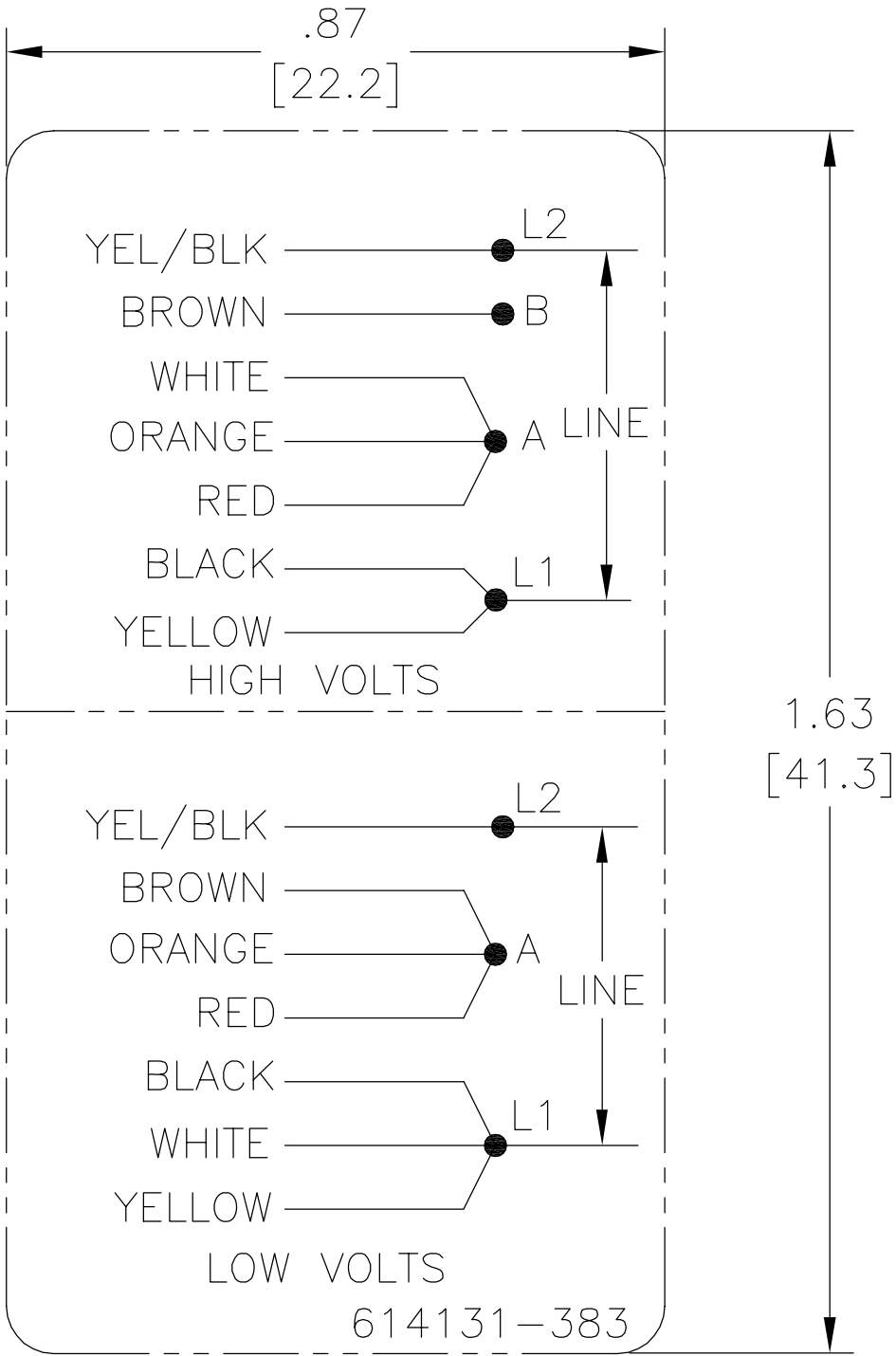
DIMENSIONS WITHOUT TOLERANCES ARE FOR REFERENCE ONLY.

MAIN FRAME - OLE	ENCLOSED
END FRAME - OLE	OPEN
MAIN FRAME - LE	ENCLOSED
END FRAME - LE	OPEN


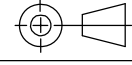
ENCLOSURE

DRAWN BY: J.RUPERT	DATE: 05-09-2011	APPROVED BY: J.RUPERT	DATE: 05-09-2011	PROCESS/FINISH: -	THIRD ANGLE PROJECTION
REGAL™ Regal Beloit America, Inc.		DESCRIPTION: MODEL-RFHP-48FR OUTLINE		SIZE DWG NO: C	
				SHEET 1	
				BDH1076	

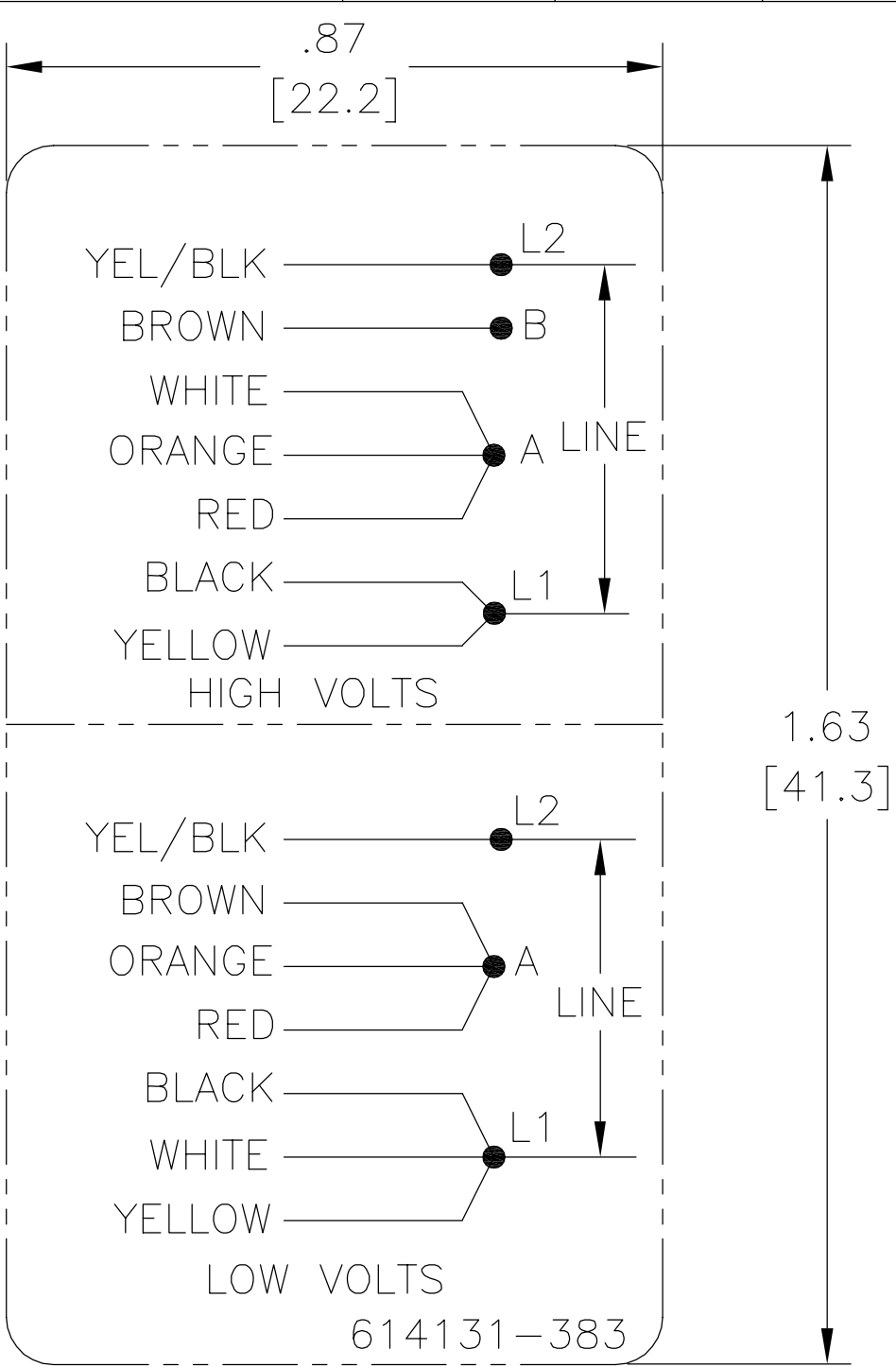
REV	ECO	REV BY	DATE	APPD	DATE
C	ECO-0022540	jrupert	09-21-2011	jrupert	09-21-2011



- NOTES:
1. FOR USE WITH 614129 NAMEPLATE BLANK
 2. — — — — — INDICATES DIMENSION LIMITS
 3. DIE TO BE MADE FROM MASTER SUPPLIED BY A. O. SMITH CORPORATION
 4. DIE MUST PRODUCE A LEGIBLE IMPRESSION.


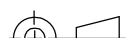
GEOMETRIC CHARACTERISTICS & SYMBOLS ∟ FLATNESS — STRAIGHTNESS ∠ ANGULARITY ⊥ PERPENDICULARITY (SQUARENESS) // PARALLELISM ○ ROUNDNESS (CIRCULARITY) ⌀ CYLINDRICITY △ PROFILE OF ANY SURFACE ⌒ PROFILE OF ANY LINE ↑ RUNOUT ⊕ TRUE POSITION ◎ CONCENTRICITY ≡ SYMMETRY	UNLESS OTHERWISE SPECIFIED DIM. TOLERANCES ARE AS FOLLOWS: INCH X XX XXX XXXX mm ±.1 ±.02 ±.005 ±.0005 mm ±0.5 ±0.13 ±0.013 ANG. ±.50 DEG REMOVE BURRS & BREAK SHARP EDGES: INCH .003-.015 mm 0.1-0.4 CORNER FILLETS TO: INCH .020 mm 0.5 MACHINE SURFACES: INCH 125 mm 3.2 METRIC DIMS. SHOWN IN [BRACKETS]	DR BY:	jrupert	09-21-2011	 ELECTRICAL PRODUCTS COMPANY <small>INNOVATION HAS A NAME. A DIVISION OF A. O. SMITH CORPORATION</small>		
		APPD:	jrupert	09-21-2011	DESCRIPTION CONN DIAGRAM NAMEPLATE		
		THIRD ANGLE PROJECTION 		EDS DATE 02-22-2008 FORMAT REV F			
		CONFIDENTIAL: THIS DRAWING AND ITS INFORMATION ARE THE EXCLUSIVE AND CONFIDENTIAL PROPERTY OF A.O. SMITH CORP. AND ARE NOT TO BE DISCLOSED, DUPLICATED, DISTRIBUTED OR OTHERWISE USED WITHOUT THE WRITTEN CONSENT OF A.O. SMITH CORP. -ALL RIGHTS RESERVED. ASME Y14.5M 1994				SIZE A	DWG NO 614131-383
						SCALE NONE	SHEET 1

REVISION:	ECO	REVISADO POR:	FECHA:	APROBADO POR:	FECHA:
C	ECO-0022540	jrupert	09-21-2011	jrupert	09-21-2011

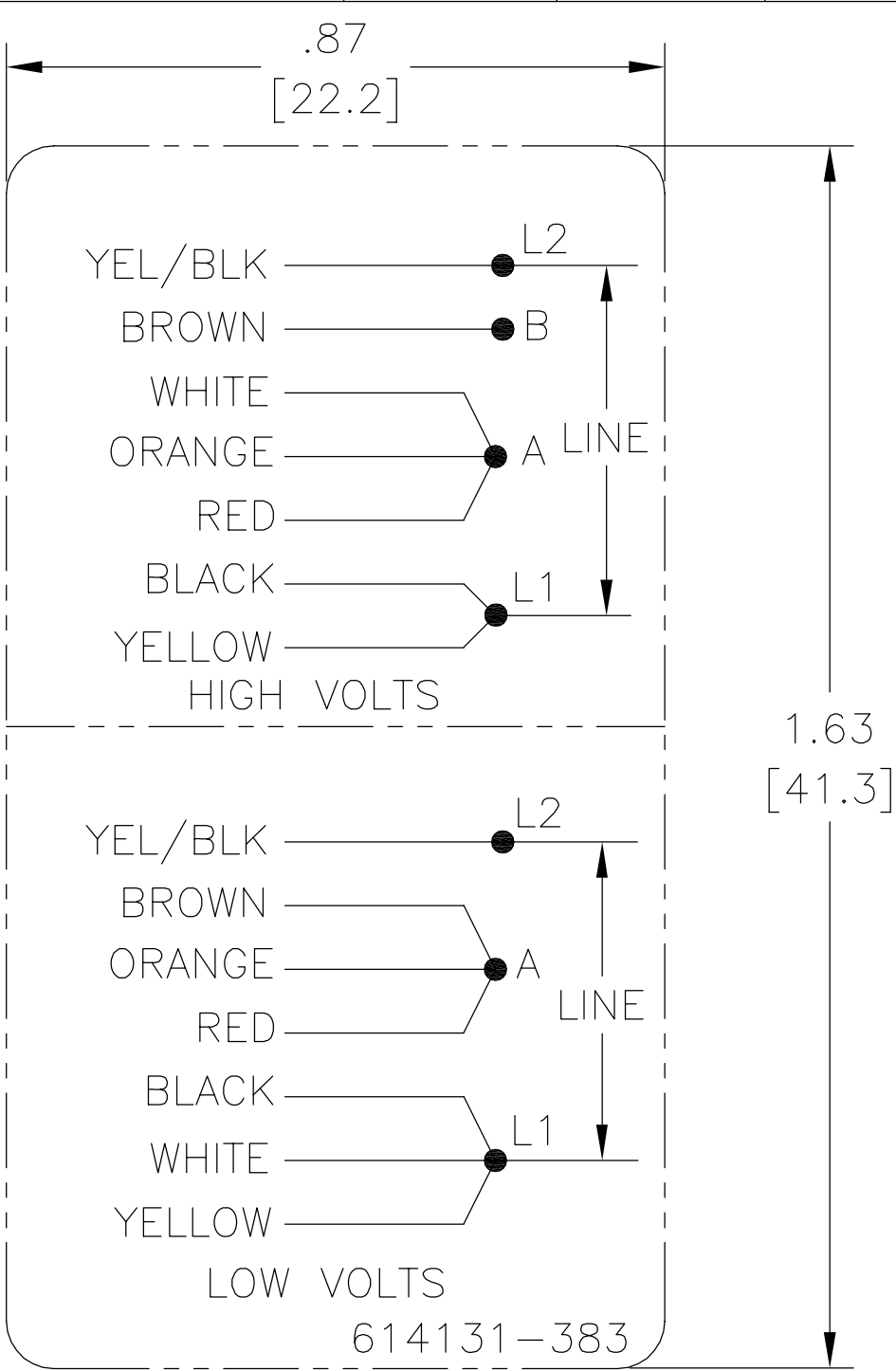


NOTES:

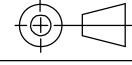
1. FOR USE WITH 614129 NAMEPLATE BLANK
2. — — — — — INDICATES DIMENSION LIMITS
3. DIE TO BE MADE FROM MASTER SUPPLIED BY A. O. SMITH CORPORATION
4. DIE MUST PRODUCE A LEGIBLE IMPRESSION.

CARACTERISTICAS DE GEOMETRIA Y SIMBOLOS ∇ PLANICIDAD — RECTITUD ∠ ANGULARIDAD ⊥ PERPENDICULARIDAD (A ESCUADRA) // PARALELISMO ○ REDONDEZ (CIRCULARIDAD) ⌀ CILINDRICIDAD ⌒ PERFIL DE CUALQUIER SUPERFICIE ⌒ PERFIL DE CUALQUIER LINEA ↑ VARIACION ⊕ POSICION REAL ◎ CONCENTRICIDAD ≡ SIMETRIA	A MENOS QUE SE ESPECIFIQUE DE OTRA MANERA, LAS TOLERANCIAS DE LAS DIMS. SON LAS SIGUIENTES: X XX XXX XXXX PULG ±.1 ±.02 ±.005 ±.0005 mm ±0.5 ±0.13 ±0.013 ANG. ±.50 GRADOS ELIMINAR REBABAS Y ORILLAS FILOSAS DEL BORDE. PULG .003-.015 mm 0.1-0.4 FILETEAR ESQUINA: PULG .020 mm 0.5 MAQUINAR SUPERFICIES PULG 125 mm 3.2 DIMS METRICAS MOSTRADAS [PARENTESIS]	DIBUJADO POR: jrupert	09-21-2011	<div>ELECTRICAL PRODUCTS COMPANY <small>Innovation has a name.</small> <small>A DIVISION OF A. O. SMITH CORPORATION</small></div>		
		APROBADO POR: jrupert	09-21-2011			
		TERCER ANGULO DE PROYECCION		FECHA EDS: 02-22-2008 REV. FORMATO: F	DESCRIPCION: CONN DIAGRAM NAMEPLATE	
		CONFIDENCIAL: ESTE DIBUJO Y SU INFORMACION SON PROPIEDAD DE USO EXCLUSIVO Y CONFIDENCIAL DE A.O.SMITH CORP. Y NO DEBERAN SER REVELADOS, DUPLICADOS, DISTRIBUIDOS O USARSE DE OTRA MANERA SIN EL CONSENTIMIENTO ESCRITO DE A.O. SMITH CORP. -TODOS LOS DERECHOS RESERVADOS.ASME Y14.5M 1994			TAMAÑO: A	NUMERO DE DIBUJO: 614131-383
					ESCALA:NONE	

??	ECO	??	??	??	??
C	ECO-0022540	jrupert	09-21-2011	jrupert	09-21-2011



- NOTES:
1. FOR USE WITH 614129 NAMEPLATE BLANK
 2. — — — — — INDICATES DIMENSION LIMITS
 3. DIE TO BE MADE FROM MASTER SUPPLIED BY A. O. SMITH CORPORATION
 4. DIE MUST PRODUCE A LEGIBLE IMPRESSION.

<div>????? □ ??? — ??? ∠ ??? ⊥ ??? // ??? ○ ??? ⊗ ??? △ ??? ∩ ??? ↑ ??? ⊕ ??? ⊙ ??? ≡ ???</div>	<div>????? ?????? ?? X XX XXX XXXX ?? ±.1 ±.02 ±.005 ±.0005 ?? ±0.5 ±0.13 ±0.013 ?? ±50 ? ?????? ?? .003-.015 ?? 0.1-0.4 ?? ?? .020 ?? 0.5 ????? ?? 125 ?? 3.2 ??????[]</div>	?: jrupert	09-21-2011	<div><div><div>ACSmith</div><div>Innovation has a name.</div></div><div><div>ELECTRICAL PRODUCTS COMPANY</div><div>A DIVISION OF A. O. SMITH CORPORATION</div></div></div>	
		?: jrupert	09-21-2011		
		????? 	?????? 02-22-2008 ?????? F	?? CONN DIAGRAM NAMEPLATE	
		?: ?????????????A.O.SMITH????? ??A.O.SMITH???????????????????? ??????—?????		?? A	?? 614131-383
		ASME Y14.5M 1994		?? NONE	?? 1