

PRODUCT INFORMATION PACKET

marathon®
Motors

Model No: 056T17V5336

Catalog No: N567

0.50 HP Washdown Motor, 3 phase, 1800 RPM, 208-230/460 V, 56C Frame, TENV
General Purpose Motors



Regal and Marathon are trademarks of Regal Rexnord Corporation or one of its affiliated companies.
©2021 Regal Rexnord Corporation, All Rights Reserved. MC017097E

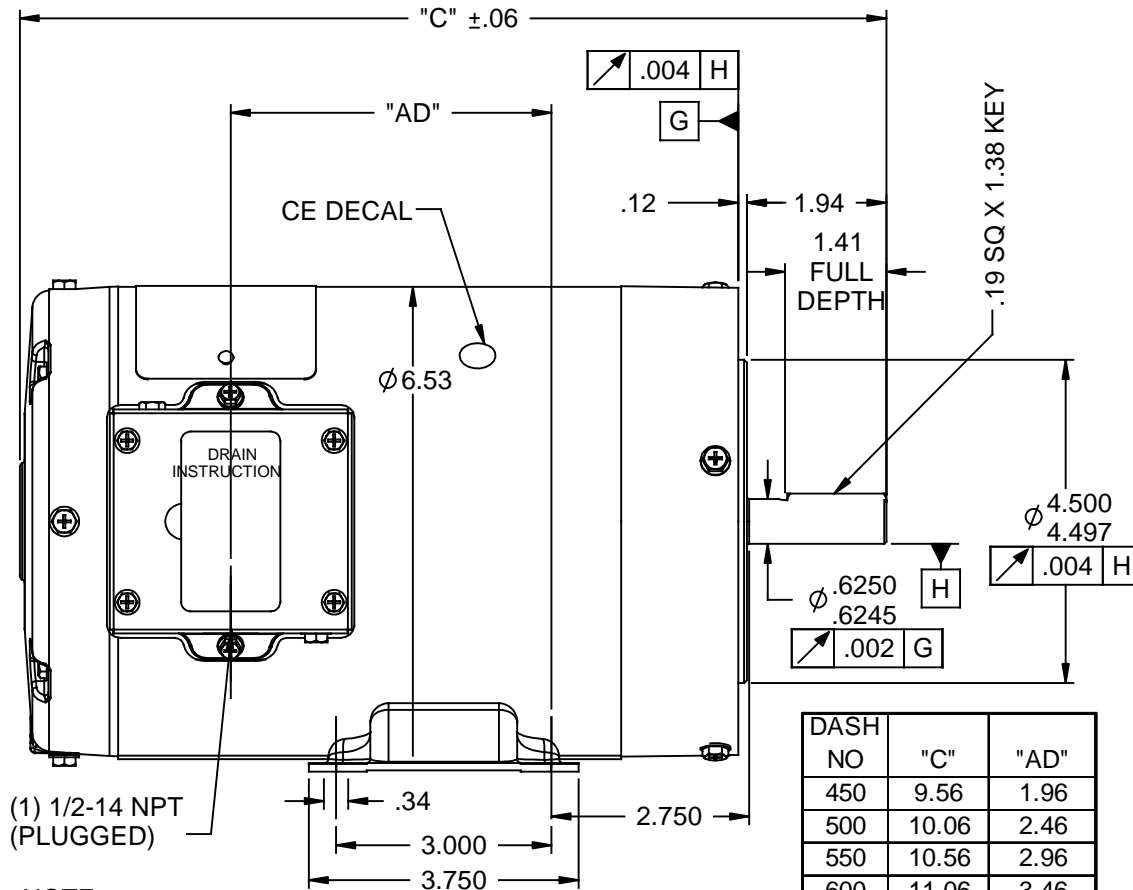
RegalRexnord

Nameplate Specifications

Output HP	0.50 Hp	Output KW	0.37 kW
Frequency	60 Hz	Voltage	208-230/460 V
Current	2.0-1.8/0.90 A	Speed	1725 rpm
Service Factor	1.15	Phase	3
Efficiency	78.5 %	Power Factor	67
Duty	Continuous	Insulation Class	F
Design Code	B	KVA Code	L
Frame	56C	Enclosure	Totally Enclosed Non Ventilated
Thermal Protection	No	Ambient Temperature	40 °C
Drive End Bearing Size	6205	Opp Drive End Bearing Size	6203
UL	Recognized	CSA	Y
CE	Y	IP Code	55
Number of Speeds	1		

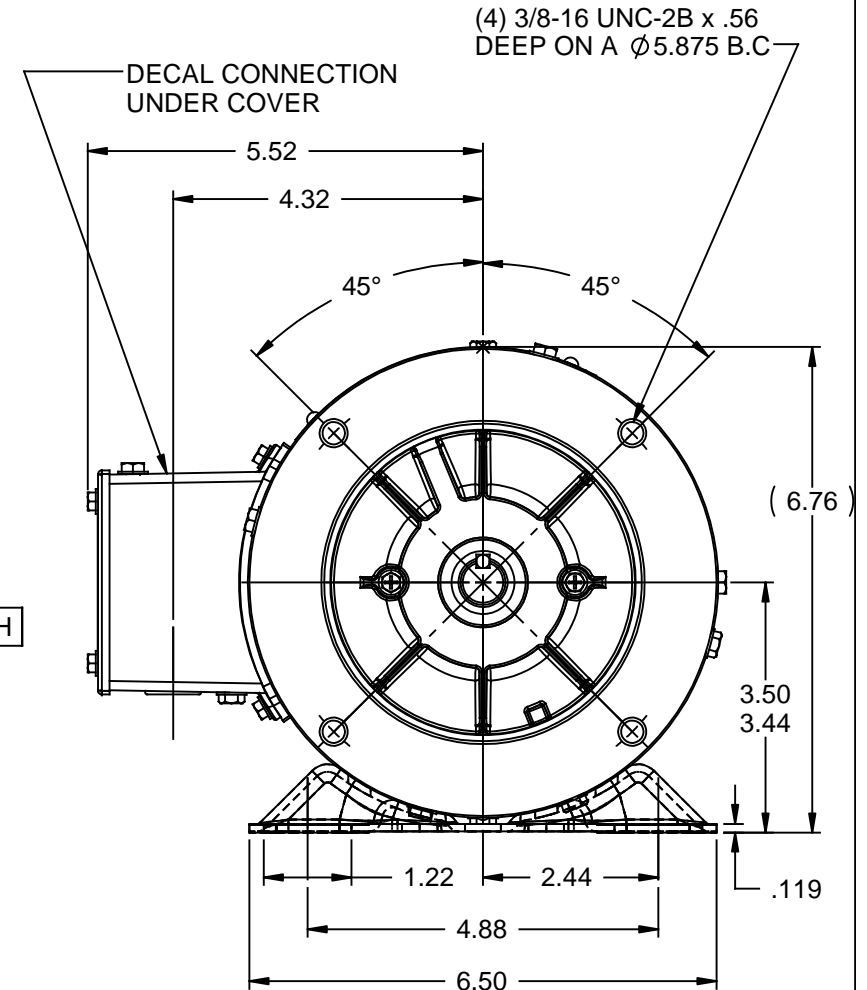
Technical Specifications

Electrical Type	Squirrel Cage Inverter Rated	Starting Method	Line Or Inverter
Poles	4	Rotation	Reversible
Resistance Main	9.66 Ohms	Mounting	Rigid Base
Motor Orientation	Horizontal	Drive End Bearing	Ball
Opp Drive End Bearing	Ball	Frame Material	Rolled Steel
Shaft Type	T	Overall Length	10.08 in
Frame Length	5.00 in	Shaft Diameter	0.625 in
Shaft Extension	1.94 in	Assembly/Box Mounting	F1 ONLY
Inverter Load	CONSTANT 1000:1		
Outline Drawing	607-0022-500	Connection Drawing	005010.01ME



- NOTE:
- 1) SHAFT SEALS & V-RINGS
 - 2) DRAIN HOLES IN BOTH ENDBELLS & CONDUIT BOX
 - 3) GASKETS THROUGHOUT
 - 4) STAINLESS STEEL SHAFT, HARDWARE & NAMEPLATE

DASH NO	"C"	"AD"
450	9.56	1.96
500	10.06	2.46
550	10.56	2.96
600	11.06	3.46
650	11.56	3.96
700	12.06	4.46
750	12.56	4.96
800	13.06	5.46



			TOLERANCES UNLESS SPECIFIED			DRAWN JD 07/01/2011	
			DEC	INCHES		CHK	
			.X	$\pm .1$		APPR	
			.XX	$\pm .03$		SCALE	3:8
			.XXX	$\pm .005$		REF	028834ME
			.XXXX	$\pm .0005$	TITLE OUTLINE - 56C FRAME TENV - "C" FACE MAT'L WASHGUARD	FMF	56T17V15501
NO	REVISION	BY & DATE	CHK	ANG		PAGE	OF
			RFP	PREV	FINISH	SIZE	DRAWING NO
			NETWORK FILE NAME 607-0022			A	607-0022
						REV	

THIRD ANGLE
PROJECTION



VIEW FROM OUTSIDE OF MOTOR AT SWITCH END.



LINE LEADS



VOLTAGE	L1	L2	L3	JOIN & INSULATE
HIGH	T1	T2	T3	(T4,T7) (T5,T8) (T6,T9)
LOW	T1,T7	T2,T8	T3,T9	T4,T5,T6

NO.	REVISION	BY & DATE	CHK	TOLERANCES UNLESS SPECIFIED		TITLE	DRAWN RDW 04/12/02
				DEC.	INCHES		
				.X	±.1	EXTERNAL WIRING DIAGRAM 3 PHASE W/O PROTECTOR	CHK
				.XX	±.01		APPD
				.XXX	±.005		SCALE 1=1
				.XXXX	±.0005		REF FIG.2-51
				ANG	±1/2°	MAT'L. DECAL - 004014	FMF
				FINISH			PREV
THIS DRAWING IN DESIGN AND DETAIL IS OUR PROPERTY AND MUST NOT BE USED EXCEPT IN CONNECTION WITH OUR WORK ALL RIGHTS OF DESIGN AND INVENTION ARE RESERVED THIS IS AN ELECTRONICALLY GENERATED DOCUMENT - DO NOT SCALE THIS PRINT				RFP	04/12/02	CAD FILE 00501001ME	SIZE A
				DIST			DRAWING NO. 005010-01ME
							REV.

CERTIFICATION DATA SHEET

Model#: 56T17V5336 B
 CONN. DIAGRAM: 005010.01ME
 OUTLINE: 607-0022-500

WINDING#: T634208 NR 3
 ASSEMBLY: F1 ONLY

TYPICAL MOTOR PERFORMANCE DATA

HP	KW	SYNC. RPM	F.L. RPM	FRAME	ENCLOSURE	KVA CODE	DESIGN
1/2	.37	1800	1725	56C	TENV	L	B

PH	Hz	VOLTS	FL AMPS	START TYPE	DUTY	INSL	S.F	AMB°C	ELEVATION
3	60	208-230/460	2.0-1.8/.9	LINE OR INVERTER	CONTINUOUS	F4	1.15	40	3300

FULL LOAD EFF: 78.5	3/4 LOAD EFF: 75.8	1/2 LOAD EFF: 70.9	GTD. EFF	ELEC. TYPE	NO LOAD AMPS
FULL LOAD PF: 67	3/4 LOAD PF: 55.9	1/2 LOAD PF: 44.1	0	SQ CAGE INV RATED	1.3 / .7

F.L. TORQUE	LOCKED ROTOR AMPS	L.R. TORQUE	B.D. TORQUE	F.L. RISE°C
24 LB-FT	12.2 / 6.1	72.1 LB-FT 300	97.8 LB-FT 408	70

SOUND PRESSURE @ 3 FT.	SOUND POWER	ROTOR WK^2	MAX. WK^2	SAFE STALL TIME	STARTS /HOUR	APPROX. MOTOR WGT
0 dBA	10 dBA	0.06 LB-FT^2	0.1 LB-FT^2	0 SEC.	0	0 LBS.

*** SUPPLEMENTAL INFORMATION ***

DE BRACKET TYPE	ODE BRACKET TYPE	MOUNT TYPE	ORIENTATION	SEVERE DUTY	HAZARDOUS LOCATION	DRIP COVER	SCREENS	PAINT
C-FACE	STANDARD	RIGID	HORIZONTAL	FALSE	NONE	FALSE	NONE	WHITE - LEESON (EPOXY)

BEARINGS		GREASE	SHAFT TYPE	SPECIAL DE	SPECIAL ODE	SHAFT MATERIAL	FRAME MATERIAL
DE	OPE						
BALL	BALL						
6205	6203	POLYREX EM	T	NONE	NONE	303 STAINLESS (C-501)	ROLLED STEEL

THERMO-PROTECTORS				THERMISTORS	CONTROL	SPACE /n HEATERS
THERMOSTATS	PROTECTORS	WDG RTDs	BRG RTDs			
NONE	NOT	NONE	NONE	NONE	FALSE	NONE VOLTS

If Inverter equals NONE, contact factory for further
information

INVERTER TORQUE: CONSTANT 1000:1			
INV. HP SPEED RANGE: NONE			
ENCODER: NONE			
NONE NONE			
NONE NONE PPR			
BRAKE: NONE NONE			
NONE P/N NONE			
NONE NONE			
NONE FT-LB	NONE V	NONE Hz	

*
N
O
T
E
S
*

DATE: 06/29/2017 01:40:28 AM
 FORM 3531 REV.3 02/07/99
 ** Subject to change without notice.

Data Sheet

Date: 1/2/2019

Customer: _____

Attention: _____

Submitted by: FAREEDA DUDEKULA



56T17V5336

Submittal

Data @ 460 V

Motor Load Data

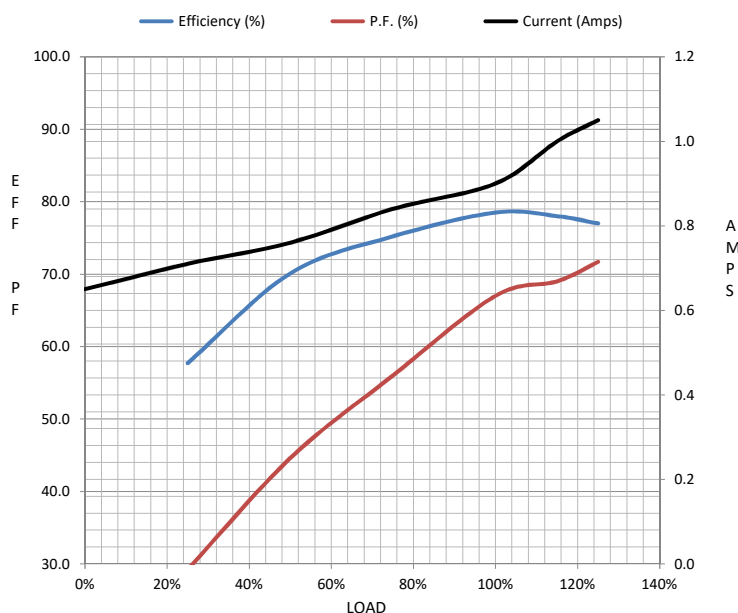
Load	0%	25%	50%	75%	100%	115%	125%	LR	
Current (Amps)	0.65	0.71	0.76	0.84	0.90	1.00	1.05	12.2	
Torque (ft-lb)	0.00	96.0	192	288	384	448	480	1,153	
RPM	1800	1788	1776	1764	1750	1,740	1735	0	
Efficiency (%)		57.7	70.1	75.2	78.5	78.0	77.0		
P.F. (%)	13.1	29.2	44.6	56.0	67.0	69.0	71.7	0.0	

Motor Speed Data

	LR	Pull-Up	BD	Rated	Idle
Speed (RPM)	0	300	1310	1750	1800
Current (Amps)	12.2	5.7	4.5	0.90	0.65
Torque (ft-lb)	1,153	1,142	1,564	384	0.00

Information Block

HP	0.5			
Sync. RPM	1800			
Frame	56			
Enclosure	TENV			
Construction	TS			
Voltage	208-230/460	V		
Frequency	60	Hz		
Design	B			
LR Code letter	L			
Service Factor	1.15			
Temp Rise @ FL	70	° C		
Duty	CONT			
Ambient	40	° C		
Elevation	3300	feet		
Rotor/Shaft wk ²	0.06	Lb-Ft ²		
Ref Wdg	T634208 NR			
Sound Pressure @ 1M	0	dBA		
VFD Rating	CONSTANT 1000:1			
Outline Dwg	034904-500			
Conn. Diag	005010.01ME			
Additional Specifications:				
0				
0				
EQUIV CKT (OHMS / PHASE)				
R1	R2	X1	X2	Xm
0.0000	0.0000	0.0000	0.0000	0.0000



Speed -Torque Curve

