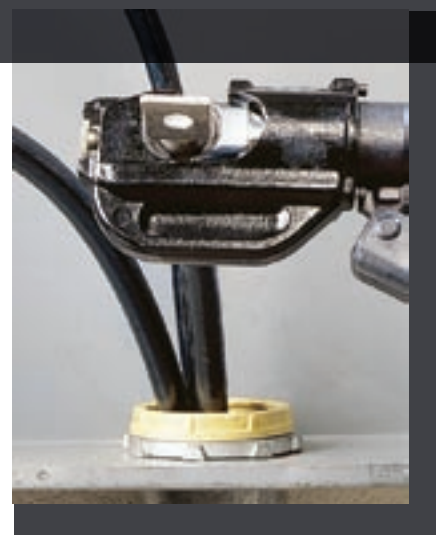
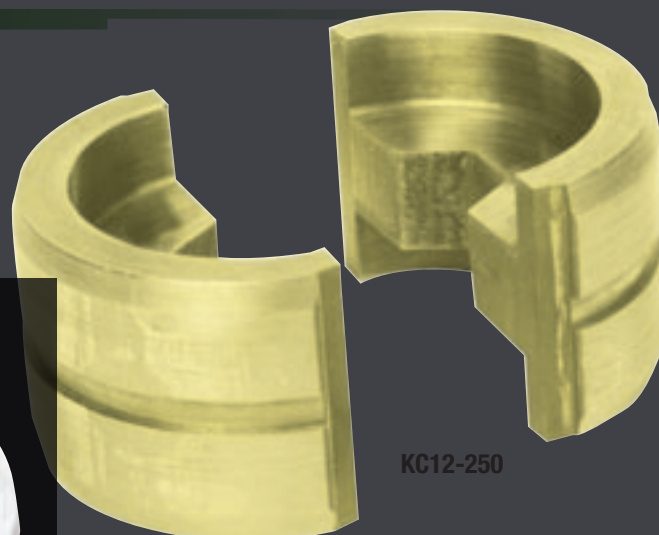


KC12 and KA12 12-Ton Crimping Dies



12-Ton UL and cUL classified crimping dies for copper and aluminum connectors

Introducing the KC12 and KA12 Series of crimping dies... Greenlee® is pleased to introduce new crimping dies for use on copper and aluminum color-coded lugs and splices. These new dies produce a hexagonal crimp that is the style preferred by many customers. They may be used with all brands of 12-ton crimping tools that are designed to accept industry "U" style dies.

When used with Greenlee 12-ton tools, both series of dies are UL and cUL classified with Anderson®, Blackburn®, FCI Burndy®, Ilasco®, Panduit®, Penn-Union®, and Thomas & Betts® copper color-coded lugs and splices. This is a Greenlee exclusive!

The KD12CU and KD12AL crimping die kits are updated to include the new dies.

PRODUCT FEATURES

- All dies produce a hexagonal style crimp - the style preferred by most customers.
- When used with Greenlee 12-ton tools, this entire series of dies are UL and cUL classified with Anderson®, Blackburn®, FCI Burndy®, Ilasco®, Panduit®, Penn-Union®, and Thomas & Betts® copper color-coded lugs and splices. This is a Greenlee exclusive!
- The KC12 and KA12 dies can be used up to the capacity of the tool with the following Greenlee tools:

EK1230	EK1230C	EK1240	EK1240C	CK1230	CK1240	HK1230	HK1230C
HK1240	HK1240C	HKL1230	RK1230	RK1230C	RK1240	RK1240C	RK1550*

*requires 48802 adapters.

- These dies may be used with other brands of 12-ton crimping tools that are designed to accept industry "U" style dies.

ORDERING INFORMATION

Cable Size	KC12				KA12			
	CAT. NO.	UPC NO.	COLOR	REPLACED PART	CAT. NO.	UPC NO.	COLOR	REPLACED PART
8 AWG	KC12-8	10996	RED	07378	KA12-8	22084	BLUE	35776
6 AWG	KC12-6	10997	BLUE	35776	KA12-6	22085	GRAY	35777
4 AWG	KC12-4	10998	GRAY	35777	KA12-4	22086	GREEN	35779
2 AWG	KC12-2	10999	BROWN	35778	KA12-2	22087	PINK	35780
1 AWG	KC12-1	11003	GREEN	35779	KA12-2	22088	GOLD	35791
1/0 AWG	KC12-1/0	11004	PINK	35780	KA12-1/0	22089	TAN	35792
2/0 AWG	KC12-2/0	11007	BLACK	35781	KA12-2/0	22090	OLIVE	35793
3/0 AWG	KC12-3/0	11010	ORANGE	35782	KA12-3/0	22121	RUBY	35794
4/0 AWG	KC12-4/0	11011	PURPLE	35783	KA12-4/0	22122	WHITE	35785
250 KCMIL	KC12-250	11012	YELLOW	35784	KA12-250	22123	RED	35786
300 KCMIL	KC12-300	11013	WHITE	35785	KA12-300	22124	BLUE	35787
350 KCMIL	KC12-350	11014	RED	35786	KA12-350	22125	BROWN	35788
400 KCMIL	KC12-400	11015	BLUE	35787	KA12-400	22126	GREEN	35789
500 KCMIL	KC12-500	11016	BROWN	35788	KA12-500	22127	PINK	35795
600 KCMIL	KC12-600	11018	GREEN	35789	KA12-600	22128	BLACK	35790
750 KCMIL	KC12-750	11020	BLACK	07379	KA12-750	22129	YELLOW	35796

CAT NO.	UPC NO.	DESCRIPTION	QTY
KD12CU	10260	Crimping die kit. Kit contains all KC12 dies except KD12-8	1
KD12AL	10261	Crimping die kit. Kit contains all KA12 dies except KA12-8	1

DISTRIBUTED BY:

All company names referred to in this data sheet are owned by each company.



USA	800-435-0786	Fax: 800-451-2632
	815-397-7070	Fax: 815-397-1865
Canada	800-435-0786	Fax: 800-524-2853
International	+1-815-397-7070	Fax: +1-815-397-9247

4455 Boeing Drive • Rockford, IL 61109-2988 • USA • 815-397-7070
 ©2006 Greenlee Textron Inc. • An ISO 9001 Company • Printed in USA
 Greenlee Textron Inc. is a subsidiary of Textron Inc.

www.greenlee.com

MA-4788 2/06