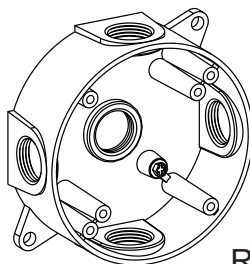


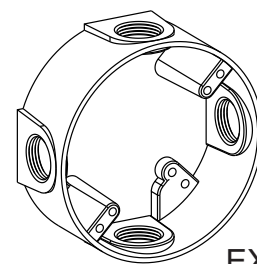
SPECIFICATION & FEATURES 4" ROUND BOXES & EXTENSION RINGS

FEATURES & DIMENSION:

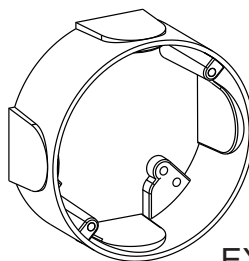
- Die Cast Aluminum
- Premium Gray Powder Coat Finish
- Closure Plugs included(except EXR-R)
- Individually shrink-wrapped with barcode
- Retail shelf packaging
- Diameter: 4"
- Depth: 1-1/2"
- RB50-5 and RB75-5 are UL listed for Fixture/Luminaire Support of 50lbs or less



RB50-5
RB75-5



EXR50-4
EXR75-4



EXR-R

CERTIFICATION:



File E227970



Listed

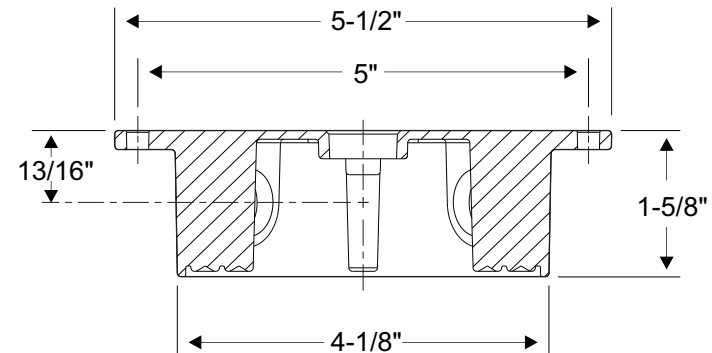
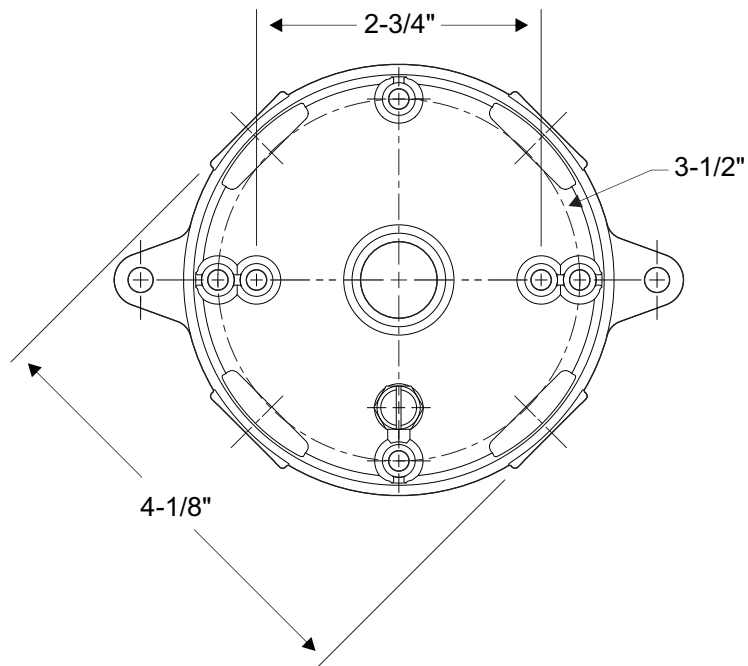


Wet Location

CONFIGURATION DATA:

Part No.			Outlet Holes	Hole Size	Closure Plug QTY	Cu.Inch	Std.Pkg.
Gray	Bronze	White					
RB50-5	RB50-5-BR	RB50-5-W	5	1/2"	4	15.8	16
RB75-5	-	-	5	3/4"	4	15.8	16
EXR50-4	-	-	4	1/2"	4	19	16
EXR75-4	-	-	4	3/4"	4	19	16
EXR-R	-	-	-	-	-	19	50





Part No.			Outlet Holes	Hole Size	Cu. Inch
Gray	Bronze	White			
RB50-5	RB50-5-BR	RB50-5-W	5	1/2"	15.8
RB75-5	-	-	5	3/4"	15.8

orbit

DISCLAIMER

THIS DATA SHEET IS FOR REFERENCE ONLY. ORBIT INDUSTRIES INC RESERVES THE RIGHT TO MAKE CHANGES TO THE DESIGN WITHOUT PRIOR NOTICE

PROPRIETARY AND CONFIDENTIAL

THE INFORMATION CONTAINED IN THIS DRAWING IS THE SOLE PROPERTY OF ORBIT INDUSTRIES INC. ANY REPRODUCTION IN PART OR AS A WHOLE WITHOUT THE WRITTEN PERMISSION OF ORBIT INDUSTRIES INC IS PROHIBITED.

Orbit Industries, Inc.

TITLE:

**4" ROUND BOXES
1-1/2" DEEP**

DWG. NO.

C0056LD1

REV

A

DO NOT SCALE THE DRAWING

E